



Center for the Enhancement of Teaching and Learning
Atlanta, Georgia 30332-0383 USA
TEL 404-894-4474
FAX 404-894-4475

June 29, 2007

Dear Colleague:

As you know, CETL processes the Course/Instructor Opinion Survey (CIOS) results for the Institute. For 49 academic terms (39 quarters and 10 semesters—excluding summer sessions), we have been collecting data and reporting descriptive statistics that provide a basis for interpreting individual ratings (categorized by class size because our experience and the general research confirm that class size is a primary variable explaining significant differences in evaluation scores).

Beginning in the Fall 2001 semester, a new streamlined CIOS was implemented. The new survey—designed by representatives of faculty, students, and administration—reduced the number of core questions from 24 to 10 and eliminated cluster scores. The following report focuses on question 10, “The instructor was an effective teacher” (formerly question 24). To provide the most meaningful comparisons with individual scores, we report statistics on question 10 for each term in the academic year and cumulative results since Fall 2001. This allows faculty to compare their scores with distributions for the specific semesters and for multi-year periods. Central tendencies and distributions of the question are reported by class size category and by college, as well as for the entire Institute. The following notation will help you interpret the report:

- “N” is the number of classes in a particular population frame.
- “Median” is the middle value of an ordered array of classes’ interpolated median scores.
- The columns “Cut 1,” “Cut 2,” “Cut 3,” and “Cut 4” indicate the quintile values (20th, 40th, 60th, and 80th percentiles) in the distribution. These values are also drawn on the accompanying charts for the cumulative distribution.
- The values range from 1 to 5, where 1 is “strongly disagree” and 5 is “strongly agree”.

I trust that these data are helpful to you. If you have any questions, feel free to contact CETL at 4-4474.

Sincerely,

Donna Llewellyn, PhD
CETL Director
donna.llewellyn@cetl.gatech.edu

Tristan T. Utschig, PhD
CETL Assistant Director
Scholarship and Assessment of Teaching and Learning
tris.utschig@cetl.gatech.edu

INSTITUTE-WIDE

Fall 2006

| Class Size | N | Median | Cut1 | Cut 2 | Cut 3 | Cut 4 |
|------------|------|--------|------|-------|-------|-------|
| < 16 | 1020 | 4.5 | 3.88 | 4.2 | 4.67 | 5 |
| 16 – 35 | 1212 | 4.3 | 3.83 | 4.17 | 4.5 | 4.78 |
| 36 – 99 | 471 | 4.25 | 3.79 | 4.1 | 4.36 | 4.69 |
| > 99 | 97 | 4.1 | 3.83 | 4 | 4.18 | 4.51 |

Spring 2007

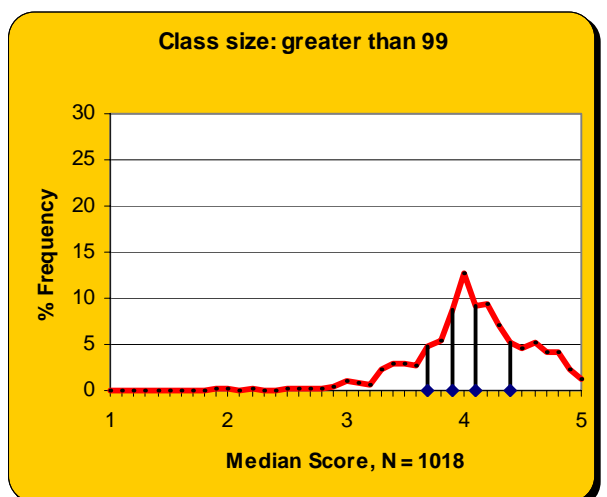
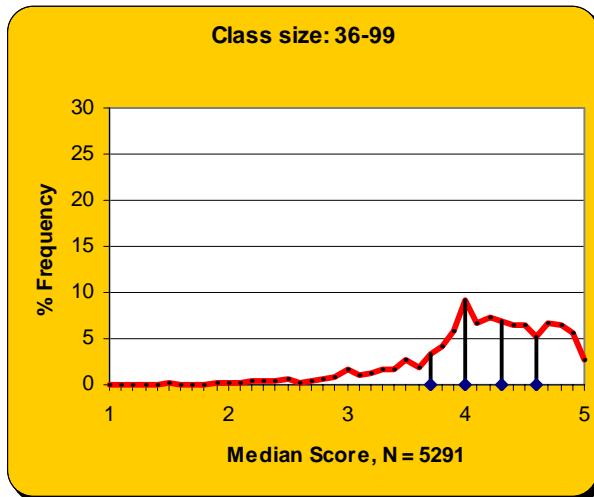
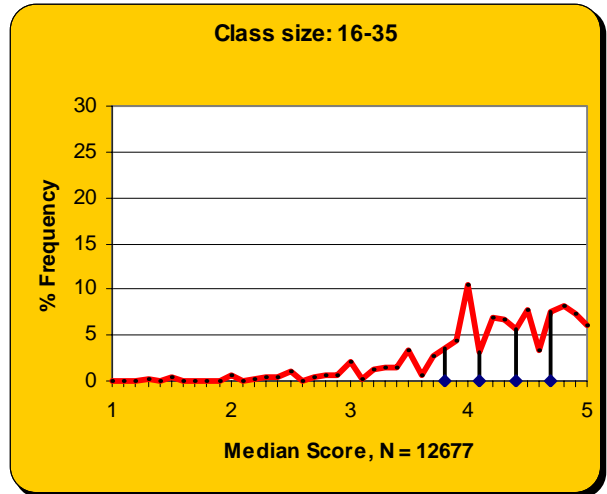
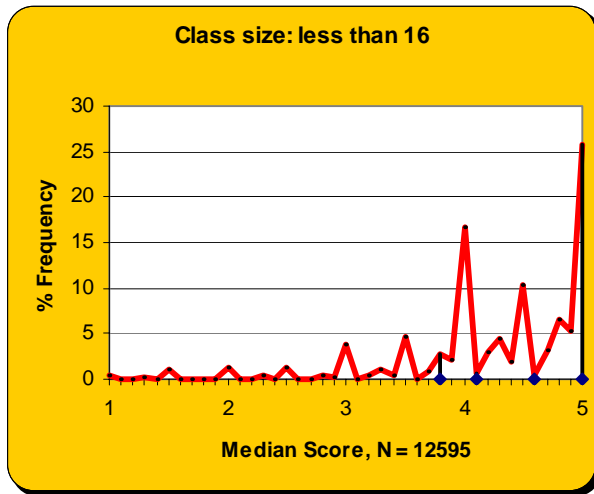
| Class Size | N | Median | Cut1 | Cut 2 | Cut 3 | Cut 4 |
|------------|------|--------|------|-------|-------|-------|
| < 16 | 1174 | 4.5 | 3.83 | 4.13 | 4.5 | 5 |
| 16 – 35 | 1010 | 4.33 | 3.83 | 4.17 | 4.5 | 4.75 |
| 36 – 99 | 401 | 4.19 | 3.75 | 4.06 | 4.35 | 4.69 |
| > 99 | 94 | 4.15 | 3.80 | 4.05 | 4.24 | 4.57 |

Fall 2001 – Spring 2007

| Class Size | N | Median | Cut1 | Cut 2 | Cut 3 | Cut 4 |
|------------|-------|--------|------|-------|-------|-------|
| < 16 | 12595 | 4.5 | 3.83 | 4.14 | 4.63 | 5 |
| 16 – 35 | 12677 | 4.25 | 3.75 | 4.1 | 4.42 | 4.75 |
| 36 – 99 | 5291 | 4.17 | 3.70 | 4.04 | 4.3 | 4.63 |
| > 99 | 1018 | 4.04 | 3.69 | 3.95 | 4.13 | 4.46 |

INSTITUTE-WIDE

Fall 2001 – Spring 2007



COLLEGE OF ARCHITECTURE

Fall 2006

| Class Size | N | Median | Cut1 | Cut 2 | Cut 3 | Cut 4 |
|------------|-----|--------|------|-------|-------|-------|
| < 16 | 141 | 4.5 | 4 | 4.25 | 4.75 | 5 |
| 16 – 35 | 70 | 4.33 | 3.68 | 4.16 | 4.5 | 4.85 |
| 36 – 99 | 27 | 4.25 | 3.61 | 4.03 | 4.5 | 4.83 |
| > 99 | 5 | 4.86 | 4.02 | 4.42 | 4.88 | 4.91 |

Spring 2007

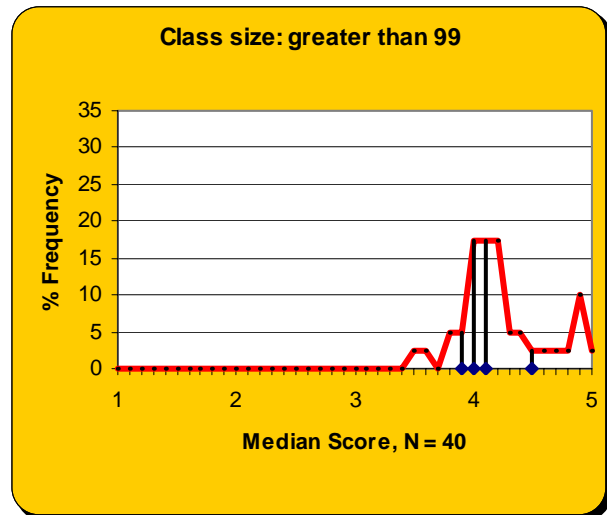
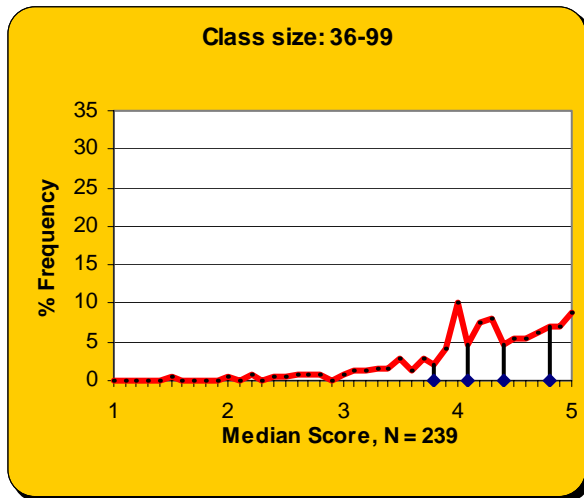
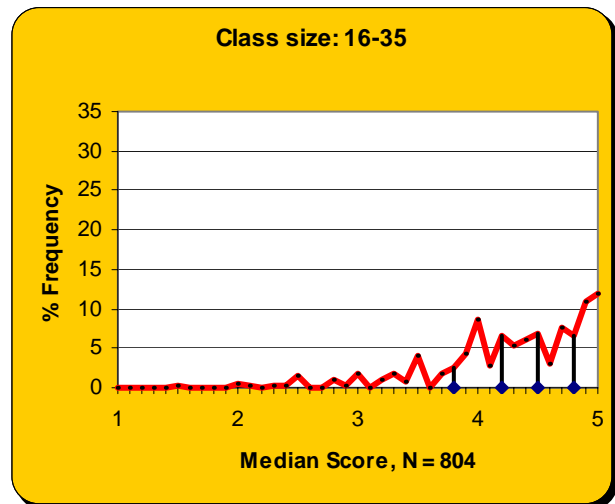
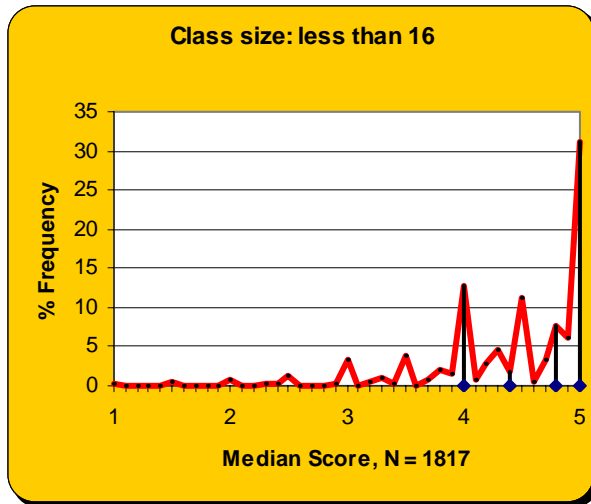
| Class Size | N | Median | Cut1 | Cut 2 | Cut 3 | Cut 4 |
|------------|-----|--------|------|-------|-------|-------|
| < 16 | 182 | 4.5 | 3.75 | 4.14 | 4.75 | 5 |
| 16 – 35 | 76 | 4.5 | 4.0 | 4.23 | 4.64 | 4.86 |
| 36 – 99 | 21 | 4.17 | 2.63 | 3.74 | 4.26 | 4.58 |
| > 99 | 2 | 4.42 | 4.36 | 4.38 | 4.46 | 4.48 |

Fall 2001 – Spring 2007

| Class Size | N | Median | Cut1 | Cut 2 | Cut 3 | Cut 4 |
|------------|------|--------|------|-------|-------|-------|
| < 16 | 1817 | 4.5 | 4 | 4.44 | 4.75 | 5 |
| 16 – 35 | 804 | 4.33 | 3.83 | 4.17 | 4.5 | 4.83 |
| 36 – 99 | 239 | 4.25 | 3.75 | 4.11 | 4.41 | 4.75 |
| > 99 | 40 | 4.11 | 3.95 | 4.06 | 4.13 | 4.54 |

COLLEGE OF ARCHITECTURE

Fall 2001 – Spring 2007



COLLEGE OF COMPUTING

Fall 2006

| Class Size | N | Median | Cut1 | Cut 2 | Cut 3 | Cut 4 |
|------------|-----|--------|------|-------|-------|-------|
| < 16 | 26 | 4.33 | 4 | 4.23 | 4.5 | 4.88 |
| 16 – 35 | 142 | 4.14 | 3.72 | 4 | 4.33 | 4.75 |
| 36 – 99 | 34 | 4.17 | 3.79 | 4.0 | 4.25 | 4.61 |
| > 99 | 1 | 4.03 | 4.03 | 4.03 | 4.03 | 4.03 |

Spring 2007

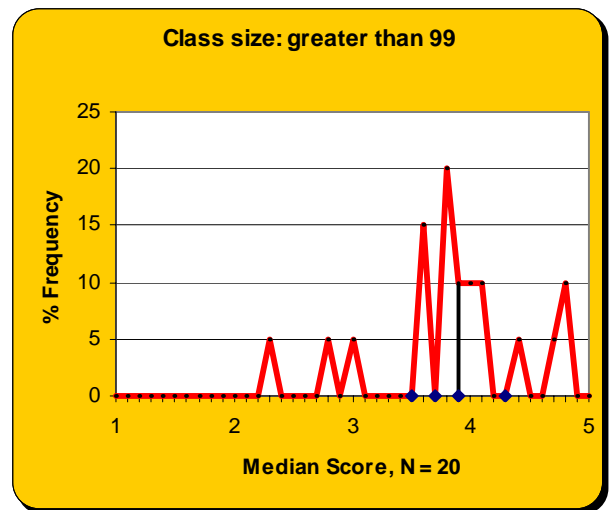
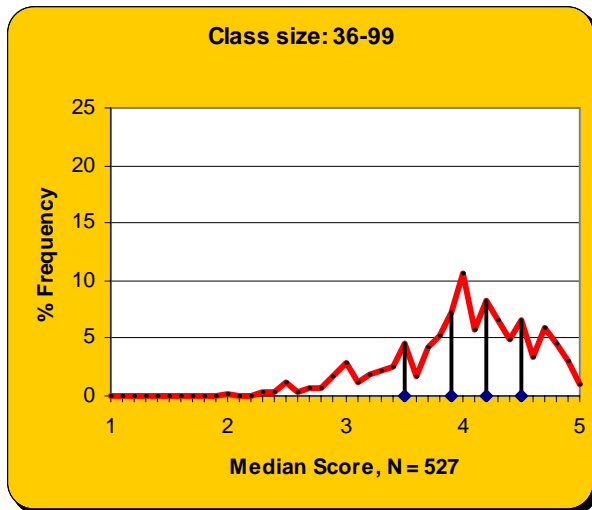
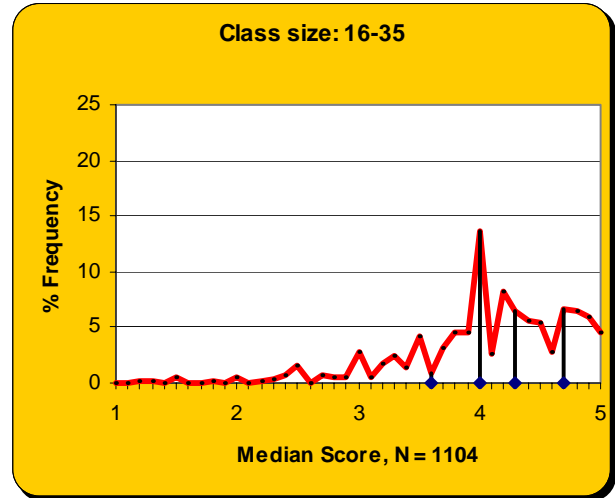
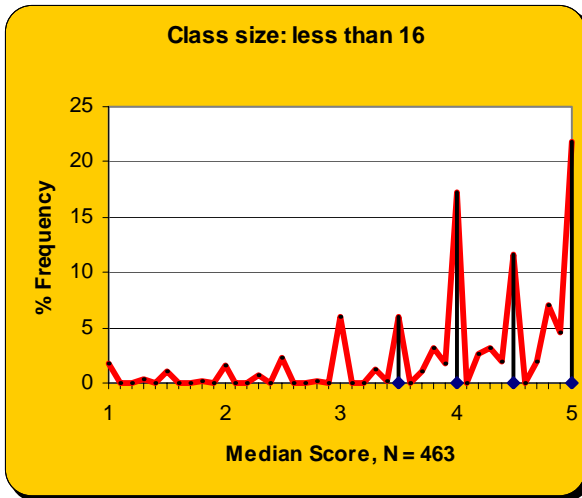
| Class Size | N | Median | Cut1 | Cut 2 | Cut 3 | Cut 4 |
|------------|----|--------|------|-------|-------|-------|
| < 16 | 40 | 4.5 | 3.55 | 4.28 | 4.72 | 5 |
| 16 – 35 | 87 | 4.33 | 3.78 | 4.14 | 4.48 | 4.75 |
| 36 – 99 | 38 | 4.22 | 3.93 | 4.14 | 4.41 | 4.7 |
| > 99 | | | | | | |

Fall 2001 – Spring 2007

| Class Size | N | Median | Cut1 | Cut 2 | Cut 3 | Cut 4 |
|------------|------|--------|------|-------|-------|-------|
| < 16 | 463 | 4.25 | 3.5 | 4 | 4.5 | 5 |
| 16 – 35 | 1104 | 4.13 | 3.63 | 4 | 4.25 | 4.67 |
| 36 – 99 | 527 | 4.03 | 3.5 | 3.92 | 4.17 | 4.5 |
| > 99 | 20 | 3.78 | 3.53 | 3.73 | 3.88 | 4.3 |

COLLEGE OF COMPUTING

Fall 2001 – Spring 2007



COLLEGE OF ENGINEERING

Fall 2006

| Class Size | N | Median | Cut1 | Cut 2 | Cut 3 | Cut 4 |
|------------|-----|--------|------|-------|-------|-------|
| < 16 | 451 | 4.25 | 3.75 | 4 | 4.5 | 4.92 |
| 16 – 35 | 290 | 4.25 | 3.83 | 4.13 | 4.38 | 4.73 |
| 36 – 99 | 201 | 4.25 | 3.79 | 4.1 | 4.33 | 4.7 |
| > 99 | 15 | 3.86 | 3.39 | 3.8 | 3.99 | 4.17 |

Spring 2007

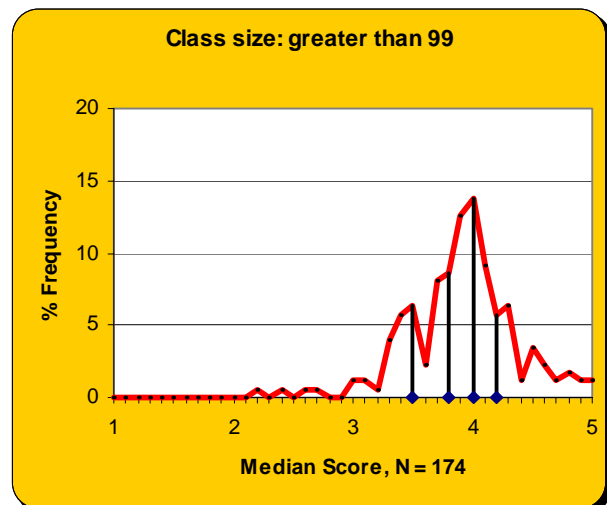
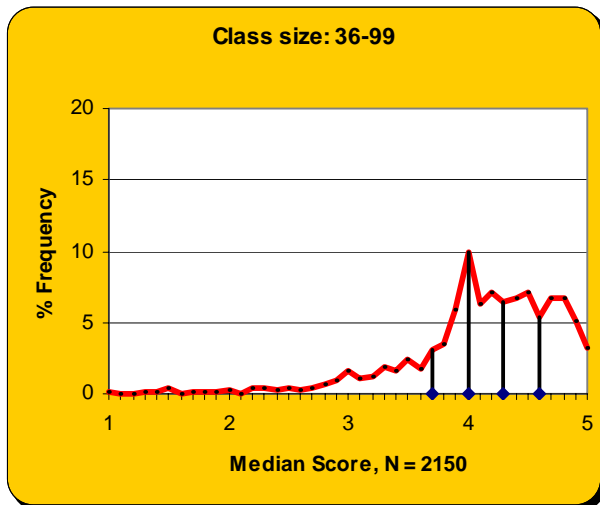
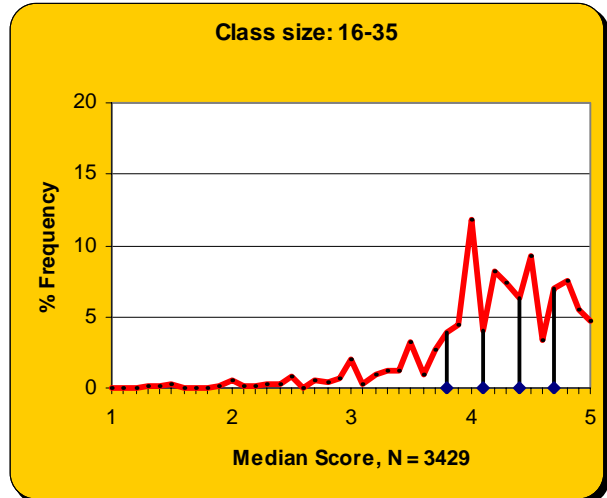
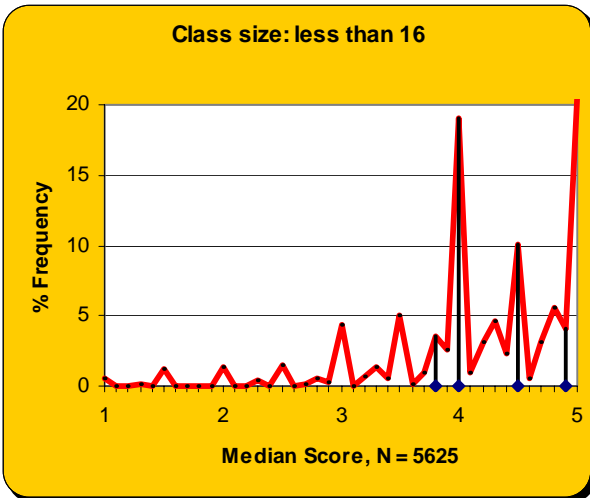
| Class Size | N | Median | Cut1 | Cut 2 | Cut 3 | Cut 4 |
|------------|-----|--------|------|-------|-------|-------|
| < 16 | 527 | 4.25 | 3.75 | 4 | 4.5 | 4.88 |
| 16 – 35 | 288 | 4.25 | 3.83 | 4.14 | 4.38 | 4.73 |
| 36 – 99 | 181 | 4.17 | 3.7 | 4.04 | 4.33 | 4.64 |
| > 99 | 17 | 4.07 | 3.75 | 3.95 | 4.18 | 4.55 |

Fall 2001 – Spring 2007

| Class Size | N | Median | Cut1 | Cut 2 | Cut 3 | Cut 4 |
|------------|------|--------|------|-------|-------|-------|
| < 16 | 5625 | 4.25 | 3.75 | 4 | 4.5 | 4.94 |
| 16 – 35 | 3429 | 4.25 | 3.79 | 4.1 | 4.38 | 4.67 |
| 36 – 99 | 2150 | 4.17 | 3.71 | 4.04 | 4.33 | 4.63 |
| > 99 | 174 | 3.87 | 3.5 | 3.79 | 3.95 | 4.18 |

COLLEGE OF ENGINEERING

Fall 2001 – Spring 2007



IVAN ALLEN COLLEGE

Fall 2006

| Class Size | N | Median | Cut1 | Cut 2 | Cut 3 | Cut 4 |
|-------------------|----------|---------------|-------------|--------------|--------------|--------------|
| < 16 | 170 | 4.75 | 4.02 | 4.54 | 4.83 | 5 |
| 16 – 35 | 275 | 4.65 | 4.2 | 4.52 | 4.75 | 4.86 |
| 36 – 99 | 22 | 4.34 | 3.91 | 4.14 | 4.52 | 4.79 |
| > 99 | 21 | 4.27 | 3.75 | 4.14 | 4.39 | 4.61 |

Spring 2007

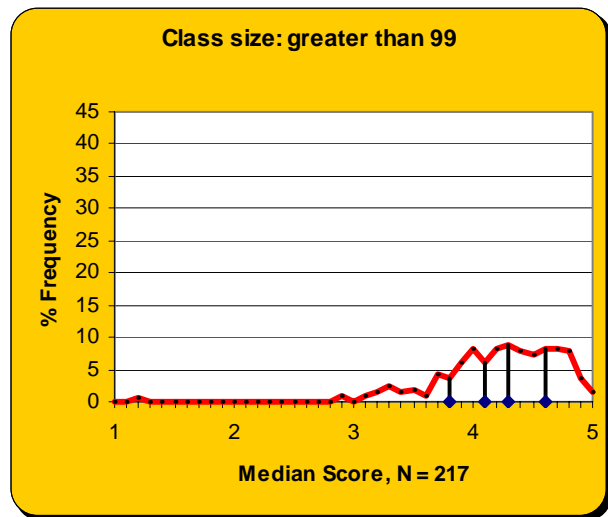
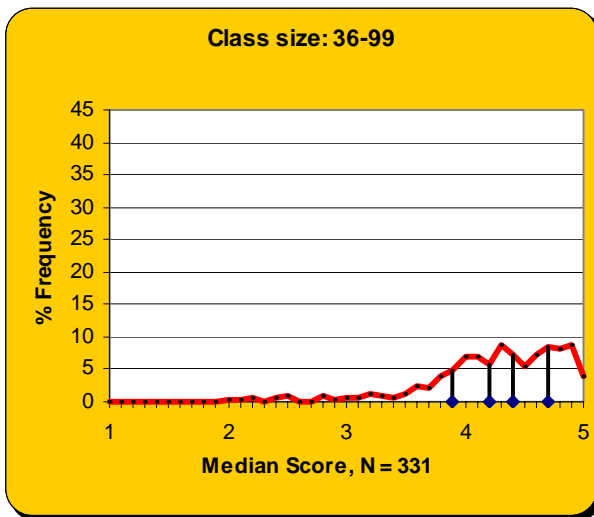
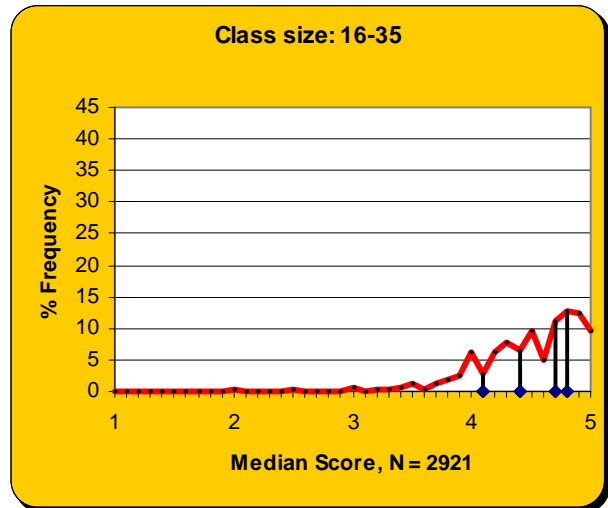
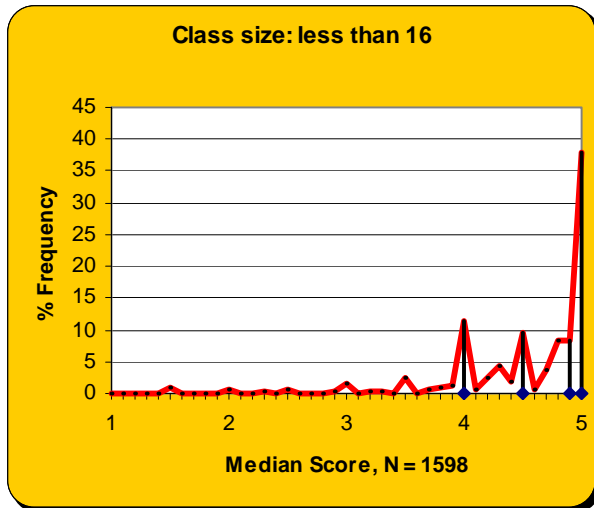
| Class Size | N | Median | Cut1 | Cut 2 | Cut 3 | Cut 4 |
|-------------------|----------|---------------|-------------|--------------|--------------|--------------|
| < 16 | 163 | 4.75 | 4 | 4.5 | 4.83 | 5 |
| 16 – 35 | 257 | 4.65 | 4.13 | 4.5 | 4.72 | 4.83 |
| 36 – 99 | 22 | 4.5 | 4 | 4.27 | 4.62 | 4.77 |
| > 99 | 20 | 4.21 | 3.91 | 4.16 | 4.28 | 4.65 |

Fall 2001 – Spring 2007

| Class Size | N | Median | Cut1 | Cut 2 | Cut 3 | Cut 4 |
|-------------------|----------|---------------|-------------|--------------|--------------|--------------|
| < 16 | 1598 | 4.75 | 4 | 4.5 | 4.88 | 5 |
| 16 – 35 | 2921 | 4.56 | 4.13 | 4.42 | 4.67 | 4.83 |
| 36 – 99 | 331 | 4.3 | 3.86 | 4.17 | 4.44 | 4.72 |
| > 99 | 217 | 4.25 | 3.83 | 4.12 | 4.34 | 4.62 |

IVAN ALLEN COLLEGE

Fall 2001 – Spring 2007



COLLEGE OF MANAGEMENT

Fall 2006

| Class Size | N | Median | Cut1 | Cut 2 | Cut 3 | Cut 4 |
|------------|----|--------|------|-------|-------|-------|
| < 16 | 36 | 4.75 | 4.1 | 4.67 | 4.96 | 5 |
| 16 – 35 | 24 | 4.58 | 3.88 | 4.36 | 4.67 | 4.79 |
| 36 – 99 | 75 | 4.4 | 4 | 4.25 | 4.58 | 4.78 |
| > 99 | 6 | 4.48 | 4.24 | 4.44 | 4.5 | 4.54 |

Spring 2007

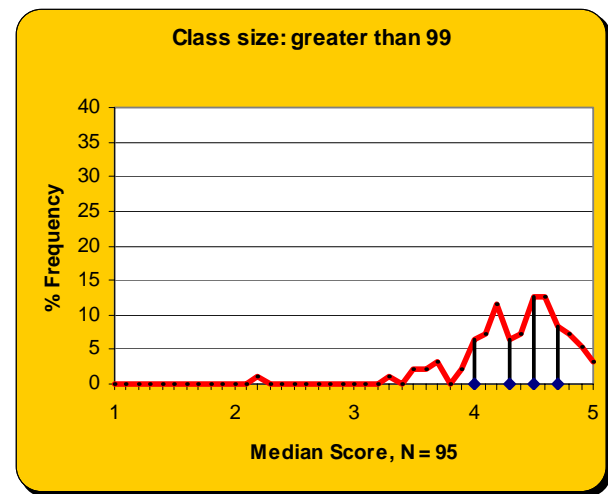
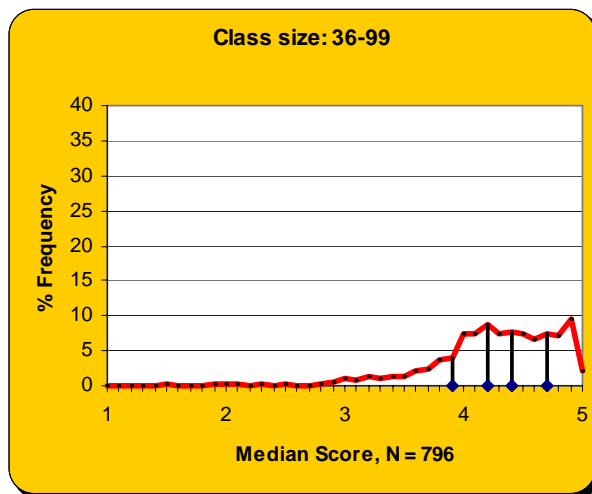
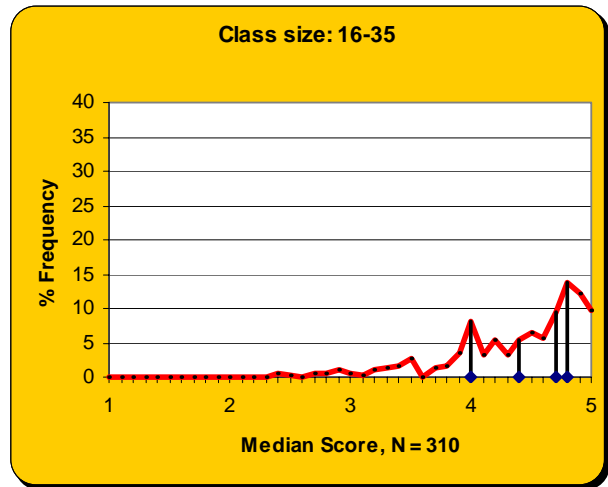
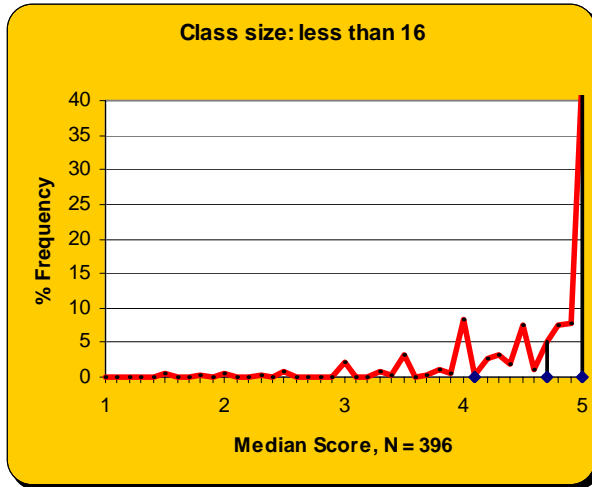
| Class Size | N | Median | Cut1 | Cut 2 | Cut 3 | Cut 4 |
|------------|----|--------|------|-------|-------|-------|
| < 16 | 35 | 4.67 | 4.02 | 4.5 | 4.83 | 5 |
| 16 – 35 | 21 | 4.64 | 4.22 | 4.5 | 4.83 | 4.91 |
| 36 – 99 | 64 | 4.28 | 4.0 | 4.17 | 4.38 | 4.69 |
| > 99 | 8 | 4.44 | 4 | 4.31 | 4.6 | 4.68 |

Fall 2001 – Spring 2007

| Class Size | N | Median | Cut1 | Cut 2 | Cut 3 | Cut 4 |
|------------|-----|--------|------|-------|-------|-------|
| < 16 | 396 | 4.83 | 4.13 | 4.7 | 5 | 5 |
| 16 – 35 | 310 | 4.55 | 4 | 4.35 | 4.67 | 4.83 |
| 36 – 99 | 796 | 4.27 | 3.87 | 4.15 | 4.4 | 4.69 |
| > 99 | 95 | 4.39 | 4.03 | 4.29 | 4.49 | 4.65 |

COLLEGE OF MANAGEMENT

Fall 2001 – Spring 2007



COLLEGE OF SCIENCES

Fall 2006

| Class Size | N | Median | Cut1 | Cut 2 | Cut 3 | Cut 4 |
|------------|-----|--------|------|-------|-------|-------|
| < 16 | 175 | 4.33 | 4 | 4 | 4.5 | 4.88 |
| 16 – 35 | 352 | 4.14 | 3.67 | 4 | 4.25 | 4.63 |
| 36 – 99 | 101 | 4 | 3.55 | 3.94 | 4.14 | 4.45 |
| > 99 | 51 | 4.03 | 3.86 | 3.98 | 4.1 | 4.32 |

Spring 2007

| Class Size | N | Median | Cut1 | Cut 2 | Cut 3 | Cut 4 |
|------------|-----|--------|------|-------|-------|-------|
| < 16 | 216 | 4.5 | 4 | 4.13 | 4.5 | 5 |
| 16 – 35 | 275 | 4 | 3.5 | 4 | 4.2 | 4.62 |
| 36 – 99 | 75 | 4.08 | 3.67 | 4.0 | 4.2 | 4.73 |
| > 99 | 47 | 4.08 | 3.68 | 3.98 | 4.14 | 4.41 |

Fall 2001 – Spring 2007

| Class Size | N | Median | Cut1 | Cut 2 | Cut 3 | Cut 4 |
|------------|------|--------|------|-------|-------|-------|
| < 16 | 2607 | 4.25 | 3.75 | 4 | 4.5 | 5 |
| 16 – 35 | 3929 | 4 | 3.5 | 3.92 | 4.17 | 4.58 |
| 36 – 99 | 1214 | 4.08 | 3.63 | 3.97 | 4.21 | 4.56 |
| > 99 | 472 | 4 | 3.65 | 3.91 | 4.08 | 4.28 |

COLLEGE OF SCIENCES

Fall 2001 – Spring 2007

