



Center for the Enhancement of Teaching and Learning
Atlanta, Georgia 30332-0383 USA
TEL 404-894-4474
FAX 404-894-4475

August 23, 2000

Dear Colleague:

As you know, CETL processes the Course/Instructor Opinion Survey (CIOS) results for the Institute. For 41 academic terms (39 quarters and 2 semesters—excluding summer sessions), we have been collecting data and updating the normative scores that provide a basis for interpreting individual ratings (categorized by class size since according to our experience and the general research, class size is the primary variable involved in significant differences in evaluation scores). Institute-wide normative data (for 1986-2000 and for 1999-2000) and normative data for each of the six colleges (for 1986-2000) are attached. The following explains how these results were obtained from the survey data and provides a key to interpreting the attached reports.

The survey results are divided into four topics for analysis. One item (item #24--“The instructor was an effective teacher”) and the three “clusters” are used to characterize responses:

- Cluster 1 (C1): Preparation and Presentation of Course (Items 10, 11, 13, 15, and 18)
- Cluster 2 (C2): Interaction with Students (Items 14, 19, 20, 21, 22)
- Cluster 3 (C3): Assessment of Student Performance (Items 12, 16, 17, 23)

For item #24, we generate the frequency distributions of normative data based on the *median* scores for this one question. For each of the clusters, first the *mean* of the four (C3) or five (C1 and C2) median scores for each item within a cluster are calculated; these means are then used to generate a normed curve. Frequency distributions of these means (or medians in the case of item #24) for all classes in that particular class size category are then used to generate “quintiles” (20th, 40th, 60th, 80th percentiles).

The reports entitled “ILLUSTRATION OF STABILITY OF NORM DATA” indicate the continuing stability of the survey data by showing how the cumulative data changes by adding in the most recent term.

The following notation will help you interpret the attached reports:

- “N” is the number of classes in a particular class size sample.
- The columns “Cut 1, Cut 2, Cut 3, and Cut 4” indicate where the lines that separate the quintiles on the accompanying curves are drawn.
- The survey responses range from 1 to 5 (1 – Strongly disagree; 2 – Disagree; 3 – Partially agree and partially disagree; 4 – Agree; 5 – Strongly agree).

I trust that these data are helpful to you. If you have any questions, feel free to contact me at billiee.pendletonparker@oars.gatech.edu or 4-8898.

Sincerely,

A handwritten signature in cursive script that reads "Billiee".

Billiee Pendleton-Parker
Assistant Director, CETL
CIOS Coordinator

Institutewide 1986-2000

**NORMATIVE DATA FOR THE C.I.O.S.
(COURSE / INSTRUCTOR OPINION SURVEY)**



Illustration of Stability of Norm Data for Institutewide 1986-2000



Class Size: Less than 16

Data	Item	N	Median	Cut1	Cut 2	Cut 3	Cut 4
40 Terms	24	7878	4.38	3.99	4.24	4.50	4.79
41 Terms	24	7940	4.38	3.99	4.24	4.50	4.79
40 Terms	C1	7878	4.22	3.87	4.12	4.34	4.59
41 Terms	C1	7940	4.22	3.87	4.12	4.33	4.59
40 Terms	C2	7878	4.42	4.06	4.32	4.53	4.73
41 Terms	C2	7940	4.42	4.06	4.32	4.52	4.73
40 Terms	C3	7878	4.16	3.83	4.07	4.25	4.52
41 Terms	C3	7940	4.16	3.83	4.07	4.25	4.51

Class Size: 16-35

Data	Item	N	Median	Cut1	Cut 2	Cut 3	Cut 4
40 Terms	24	14170	4.28	3.88	4.16	4.41	4.69
41 Terms	24	14692	4.27	3.88	4.15	4.40	4.69
40 Terms	C1	14170	4.15	3.79	4.05	4.24	4.46
41 Terms	C1	14692	4.14	3.79	4.05	4.23	4.46
40 Terms	C2	14170	4.30	3.97	4.20	4.40	4.61
41 Terms	C2	14692	4.30	3.96	4.20	4.40	4.61
40 Terms	C3	14170	4.10	3.79	4.01	4.18	4.39
41 Terms	C3	14692	4.10	3.78	4.01	4.17	4.39

Illustration of Stability of Norm Data for Institutewide 1986-2000



Class Size: 36-99

Data	Item	N	Median	Cut1	Cut 2	Cut 3	Cut 4
40 Terms	24	13850	4.14	3.74	4.03	4.25	4.55
41 Terms	24	14183	4.14	3.74	4.03	4.25	4.55
40 Terms	C1	13850	4.04	3.69	3.94	4.12	4.32
41 Terms	C1	14183	4.04	3.68	3.94	4.12	4.32
40 Terms	C2	13850	4.14	3.81	4.04	4.24	4.46
41 Terms	C2	14183	4.14	3.81	4.05	4.24	4.46
40 Terms	C3	13850	4.01	3.68	3.93	4.08	4.26
41 Terms	C3	14183	4.01	3.68	3.93	4.08	4.26

Class Size: Greater than 99

Data	Item	N	Median	Cut1	Cut 2	Cut 3	Cut 4
40 Terms	24	2289	4.06	3.54	3.93	4.18	4.49
41 Terms	24	2357	4.05	3.54	3.93	4.17	4.49
40 Terms	C1	2289	3.96	3.53	3.84	4.07	4.27
41 Terms	C1	2357	3.96	3.53	3.84	4.07	4.27
40 Terms	C2	2289	4.01	3.56	3.89	4.09	4.32
41 Terms	C2	2357	4.01	3.55	3.89	4.09	4.32
40 Terms	C3	2289	3.96	3.58	3.87	4.03	4.21
41 Terms	C3	2357	3.96	3.58	3.87	4.03	4.21

LEGEND

C1 is Preparation & Presentation = Items 10, 11, 13, 15, 18
 C2 is Interaction with Students = Items 14, 19, 20, 21, 22
 C3 is Assessment of Student Performance = Items 12, 16, 17, 23
 Item 24 = The instructor was an effective teacher.

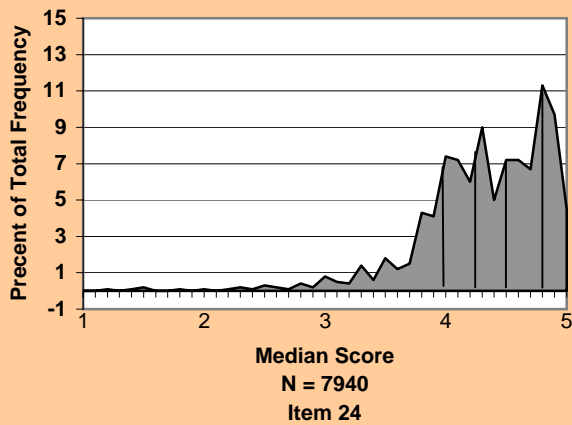
Note: In the "Data" column, "Terms" refers to quarters for every term previous to Fall 1999 and to semesters for every term starting with Fall 1999.

Norm Data for Institutewide 1986-2000

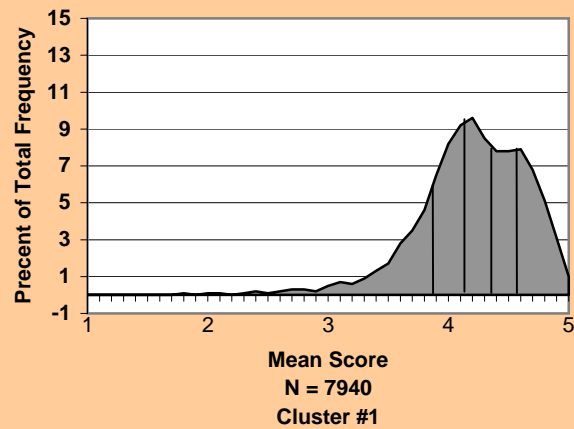


CLASS SIZE: LESS THAN 16

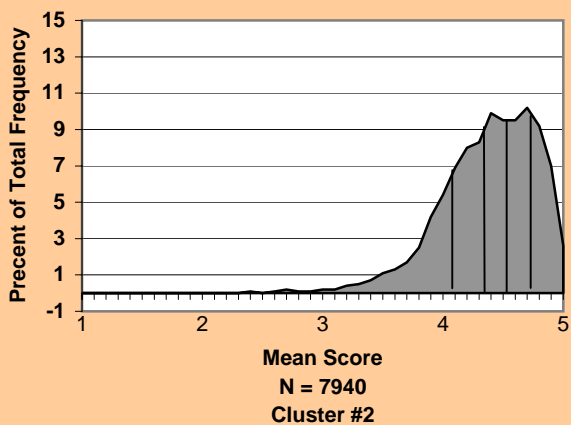
Instructor was an Effective Teacher



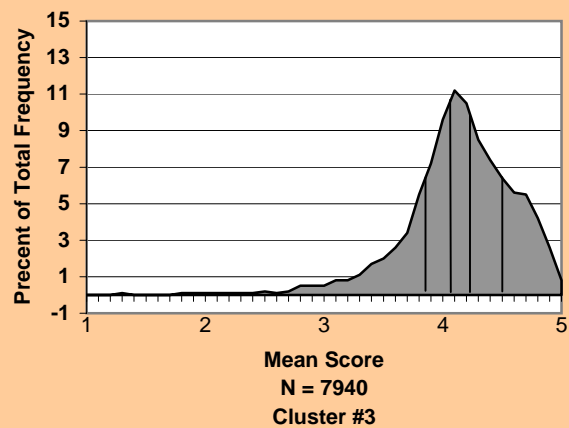
Preparation and Presentation of Course



Interaction With Students



Assessment of Student Performance

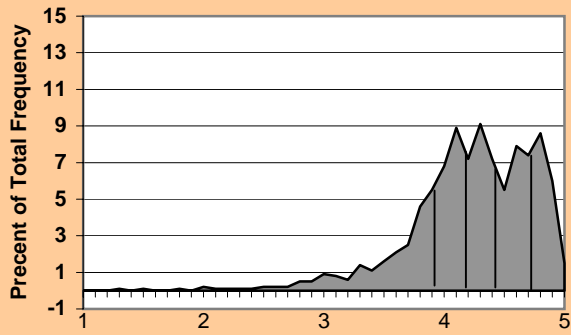


Norm Data for Institutewide 1986-2000



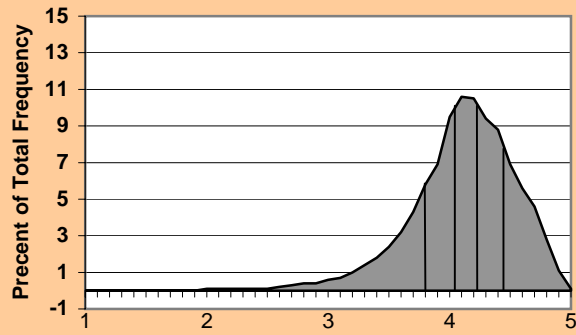
CLASS SIZE: 16 - 35

Instructor was an Effective Teacher



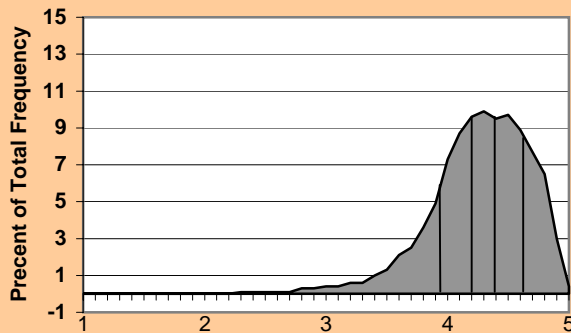
N = 14692
Item 24

Preparation and Presentation of Course



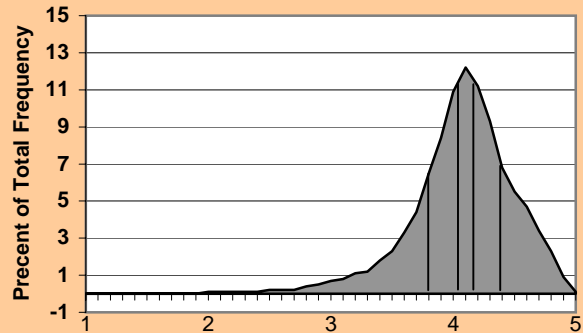
N = 14692
Cluster #1

Interaction With Students



N = 14692
Cluster #2

Assessment of Student Performance



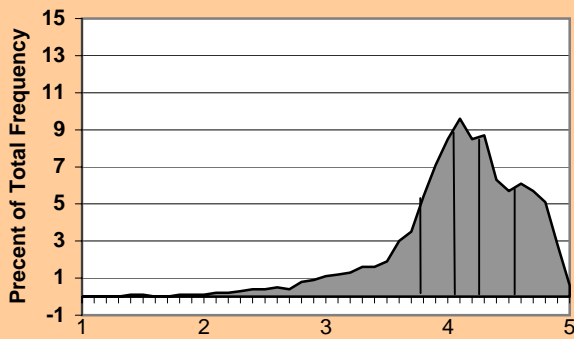
N = 14692
Cluster #3

Norm Data for Institutewide 1986-2000



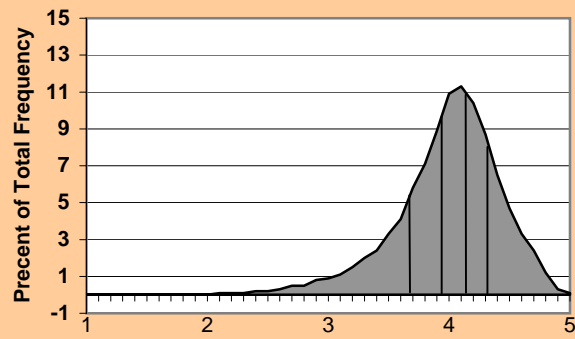
CLASS SIZE: 36 - 99

Instructor was an Effective Teacher



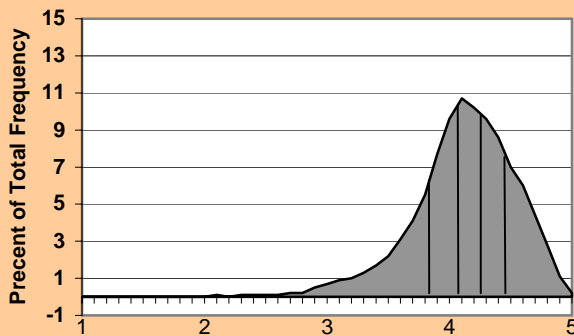
Median Score
N = 14183
Item 24

Preparation and Presentation of Course



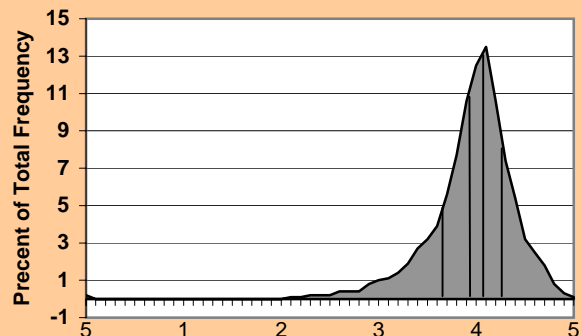
Mean Score
N = 14183
Cluster #1

Interaction With Students



Mean Score
N = 14183
Cluster #2

Assessment of Student Performance



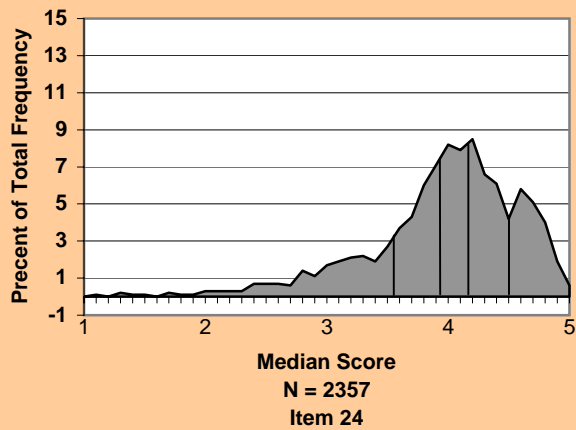
Mean Score
N = 14183
Cluster #3

Norm Data for Institutewide 1986-2000

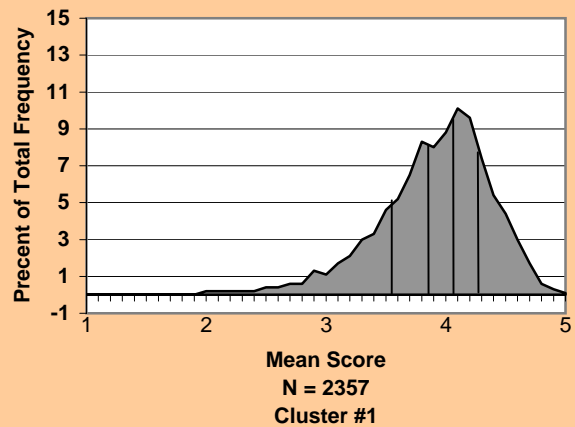


CLASS SIZE: Greater than 99

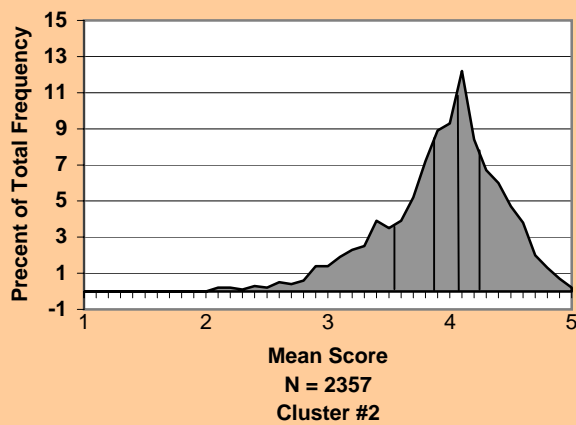
Instructor was an Effective Teacher



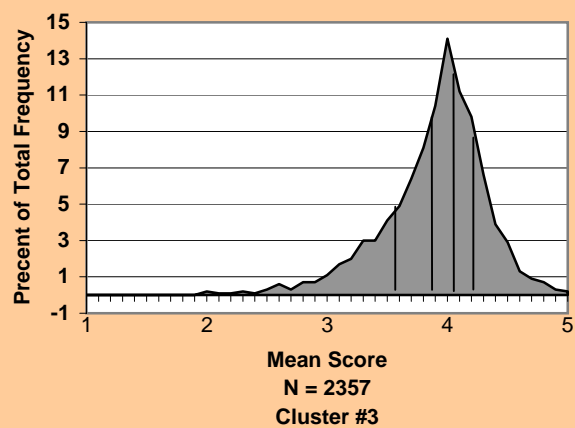
Preparation and Presentation of Course



Interaction With Students



Assessment of Student Performance



Institutewide 1999-2000

**NORMATIVE DATA FOR THE C.I.O.S.
(COURSE / INSTRUCTOR OPINION SURVEY)**



Illustration of Stability of Norm Data for Institutewide 1999-2000



Class Size: Less than 16

Data	Item	N	Median	Cut1	Cut 2	Cut 3	Cut 4
1999-00	24	140	4.25	3.84	4.17	4.38	4.70
1999-00	C1	140	4.10	3.75	3.99	4.20	4.55
1999-00	C2	140	4.33	3.78	4.23	4.43	4.70
1999-00	C3	140	4.10	3.73	4.01	4.16	4.46

Class Size: 16-35

Data	Item	N	Median	Cut1	Cut 2	Cut 3	Cut 4
1999-00	24	1157	4.10	3.70	3.98	4.23	4.56
1999-00	C1	1157	4.01	3.52	3.89	4.12	4.54
1999-00	C2	1157	4.20	3.74	4.08	4.30	4.59
1999-00	C3	1157	3.98	3.57	3.90	4.08	4.30

Class Size: 36-99

Data	Item	N	Median	Cut1	Cut 2	Cut 3	Cut 4
1999-00	24	790	4.00	3.47	3.88	4.14	4.37
1999-00	C1	790	3.91	3.32	3.74	4.03	4.27
1999-00	C2	790	4.06	3.59	3.93	4.15	4.40
1999-00	C3	790	3.88	3.31	3.76	3.98	4.19

Illustration of Stability of Norm Data for Institutewide 1999-2000

Class Size: Greater than 99

Data	Item	N	Median	Cut1	Cut 2	Cut 3	Cut 4
1999-00	24	137	3.99	3.40	3.89	4.08	4.23
1999-00	C1	137	3.96	3.47	3.79	4.06	4.21
1999-00	C2	137	3.98	3.49	3.89	4.04	4.22
1999-00	C3	137	3.94	3.42	3.82	4.02	4.14

LEGEND

C1 is Preparation & Presentation = Items 10, 11, 13, 15, 18

C2 is Interaction with Students = Items 14, 19, 20, 21, 22

C3 is Assessment of Student Performance = Items 12, 16, 17, 23

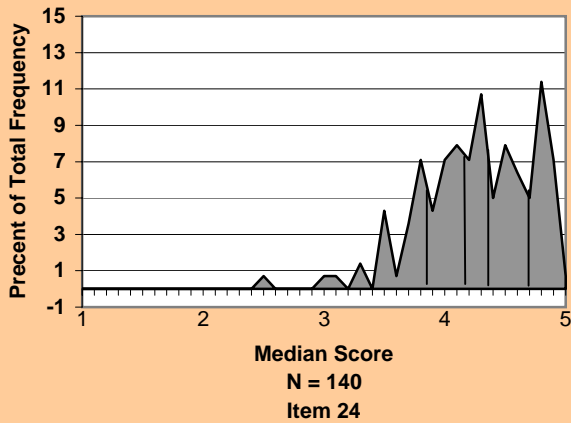
Item 24 = The instructor was an effective teacher.

Norm Data for Institutewide 1999-2000

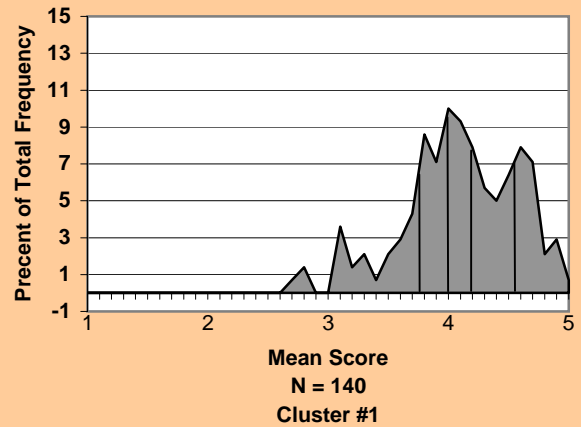


CLASS SIZE: LESS THAN 16

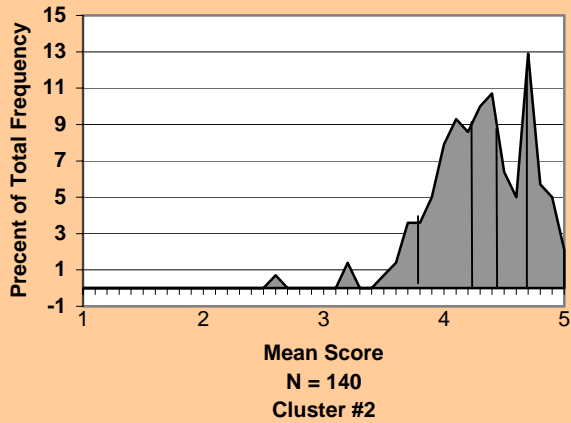
Instructor was an Effective Teacher



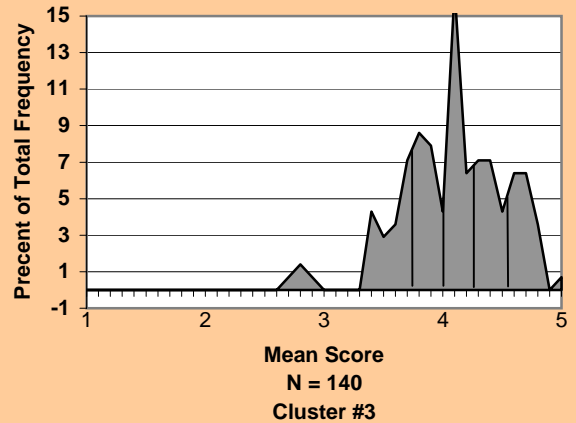
Preparation and Presentation of Course



Interaction With Students



Assessment of Student Performance

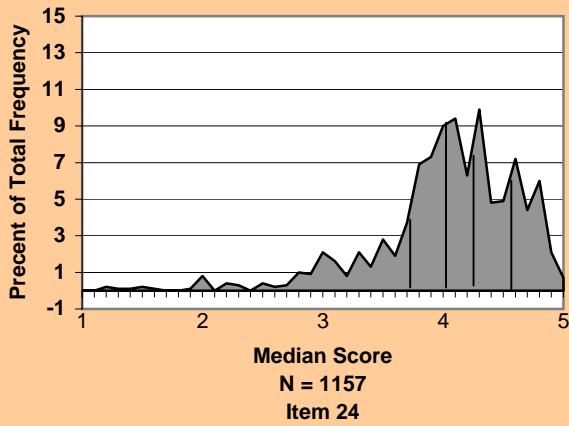


Norm Data for Institutewide 1999-2000

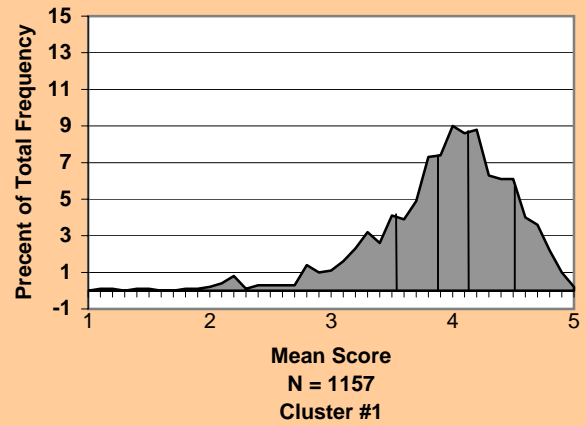


CLASS SIZE: 16 - 35

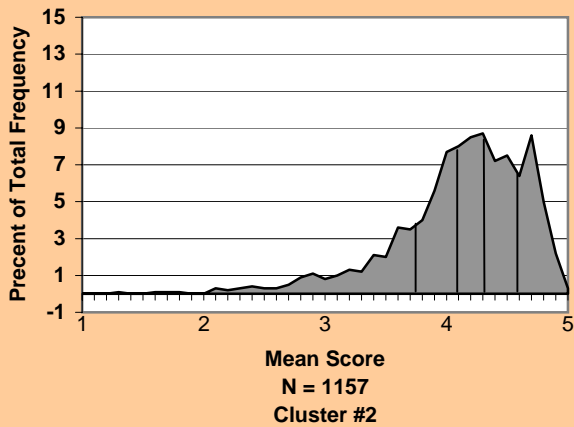
Instructor was an Effective Teacher



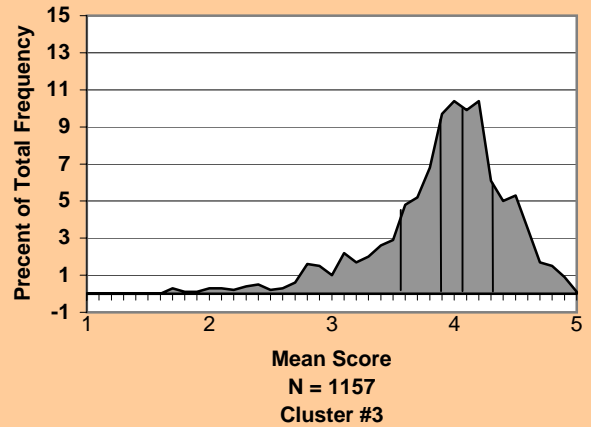
Preparation and Presentation of Course



Interaction With Students



Assessment of Student Performance

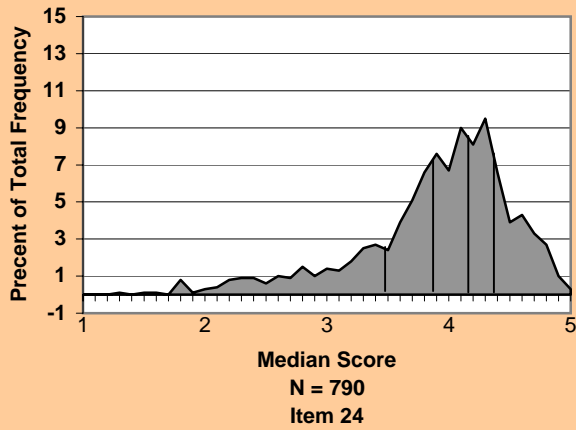


Norm Data for Institutewide 1999-2000

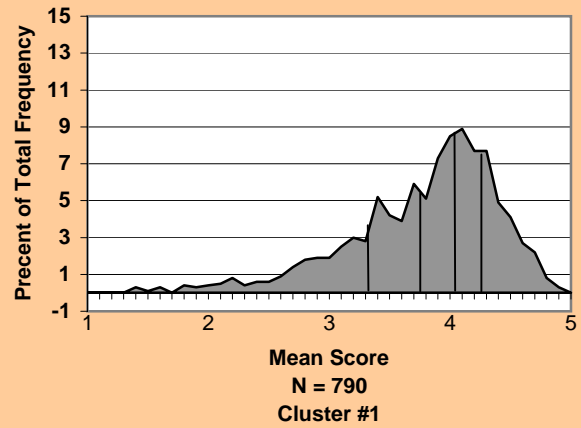


CLASS SIZE: 36 - 99

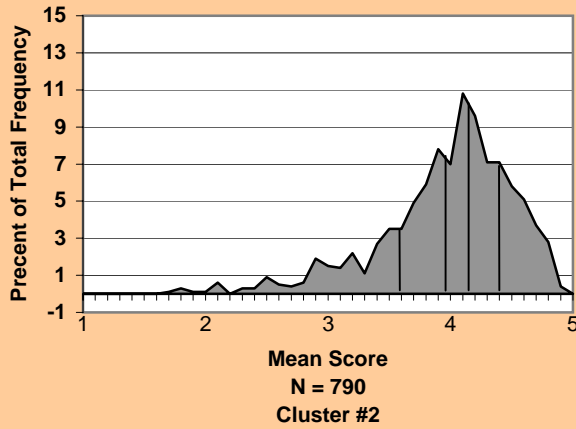
Instructor was an Effective Teacher



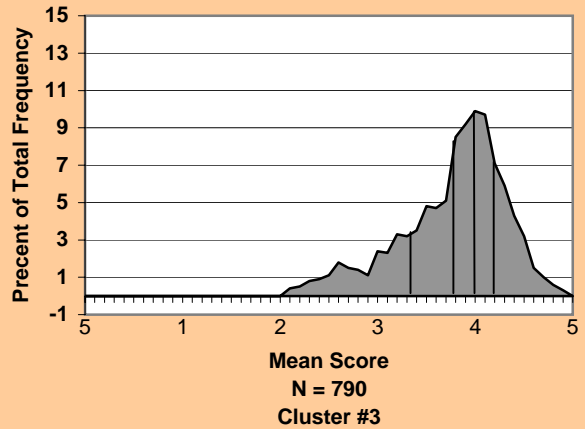
Preparation and Presentation of Course



Interaction With Students



Assessment of Student Performance

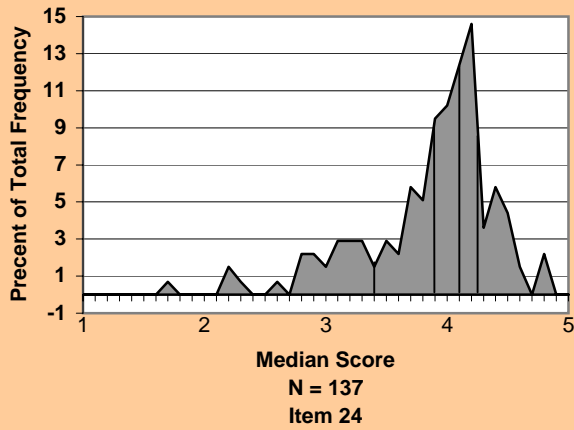


Norm Data for Institutewide 1999-2000

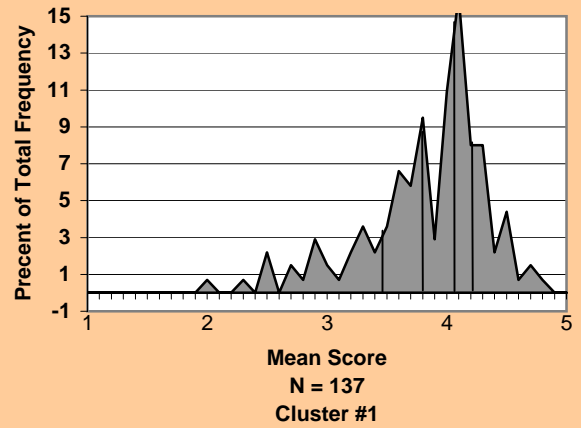


CLASS SIZE: Greater than 99

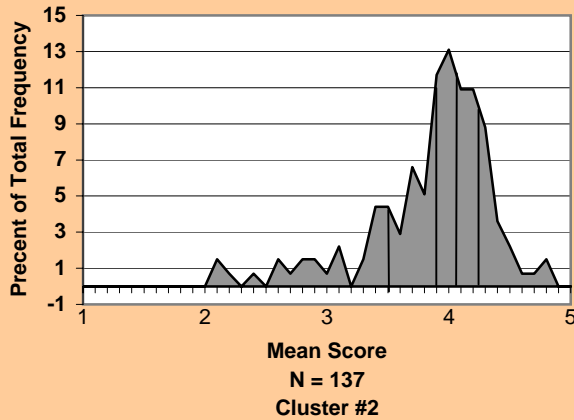
Instructor was an Effective Teacher



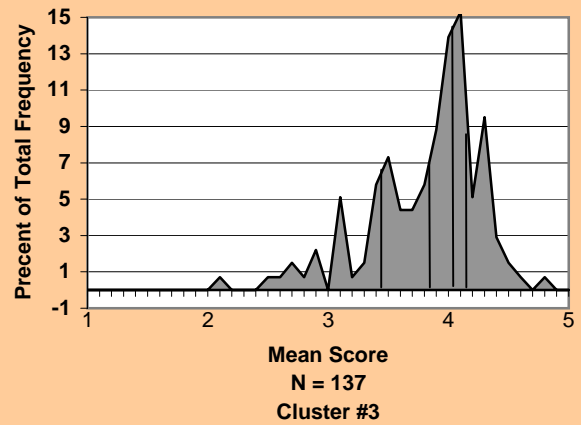
Preparation and Presentation of Course



Interaction With Students



Assessment of Student Performance



College of Architecture 1986-2000

**NORMATIVE DATA FOR THE C.I.O.S.
(COURSE / INSTRUCTOR OPINION SURVEY)**



Illustration of Stability of Norm Data for the College of Architecture



Class Size: Less than 16

Data	Item	N	Median	Cut1	Cut 2	Cut 3	Cut 4
40 Terms	24	1287	4.43	3.97	4.25	4.59	4.81
41 Terms	24	1289	4.43	3.97	4.25	4.59	4.80
40 Terms	C1	1287	4.23	3.88	4.13	4.34	4.58
41 Terms	C1	1289	4.23	3.88	4.13	4.33	4.58
40 Terms	C2	1287	4.45	4.08	4.35	4.55	4.76
41 Terms	C2	1289	4.45	4.08	4.35	4.55	4.76
40 Terms	C3	1287	4.15	3.84	4.06	4.24	4.49
41 Terms	C3	1289	4.15	3.84	4.06	4.24	4.49

Class Size: 16-35

Data	Item	N	Median	Cut1	Cut 2	Cut 3	Cut 4
40 Terms	24	1187	4.25	3.86	4.15	4.40	4.73
41 Terms	24	1212	4.25	3.85	4.15	4.40	4.73
40 Terms	C1	1187	4.14	3.78	4.02	4.23	4.51
41 Terms	C1	1212	4.13	3.77	4.02	4.23	4.51
40 Terms	C2	1187	4.35	3.95	4.22	4.47	4.68
41 Terms	C2	1212	4.35	3.95	4.23	4.46	4.67
40 Terms	C3	1187	4.09	3.80	4.02	4.16	4.45
41 Terms	C3	1212	4.09	3.79	4.02	4.16	4.44

Illustration of Stability of Norm Data for the College of Architecture



Class Size: 36-99

Data	Item	N	Median	Cut1	Cut 2	Cut 3	Cut 4
40 Terms	24	485	4.21	3.78	4.11	4.31	4.69
41 Terms	24	490	4.21	3.78	4.10	4.31	4.69
40 Terms	C1	485	4.08	3.71	3.99	4.18	4.47
41 Terms	C1	490	4.08	3.70	3.99	4.18	4.47
40 Terms	C2	485	4.23	3.90	4.13	4.34	4.60
41 Terms	C2	490	4.23	3.90	4.13	4.34	4.61
40 Terms	C3	485	4.06	3.76	3.97	4.15	4.42
41 Terms	C3	490	4.06	3.75	3.96	4.14	4.42

Class Size: Greater than 99

Data	Item	N	Median	Cut1	Cut 2	Cut 3	Cut 4
40 Terms	24	65	4.18	3.82	4.07	4.43	4.77
41 Terms	24	66	4.20	3.83	4.08	4.42	4.78
40 Terms	C1	65	4.10	3.73	4.02	4.20	4.58
41 Terms	C1	66	4.10	3.74	4.03	4.21	4.58
40 Terms	C2	65	4.20	3.75	4.02	4.31	4.65
41 Terms	C2	66	4.20	3.76	4.04	4.33	4.64
40 Terms	C3	65	4.16	3.83	4.01	4.28	4.57
41 Terms	C3	66	4.17	3.84	4.03	4.30	4.60

LEGEND

C1 is Preparation & Presentation = Items 10, 11, 13, 15, 18
 C2 is Interaction with Students = Items 14, 19, 20, 21, 22
 C3 is Assessment of Student Performance = Items 12, 16, 17, 23
 Item 24 = The instructor was an effective teacher.

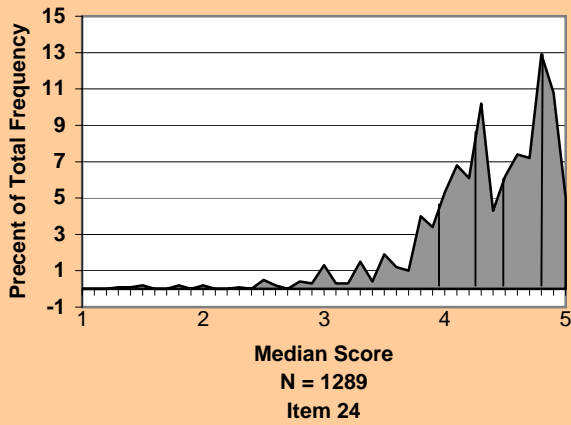
Note: In the "Data" column, "Terms" refers to quarters for every term previous to Fall 1999 and to semesters for every term starting with Fall 1999.

Norm Data for the College of Architecture

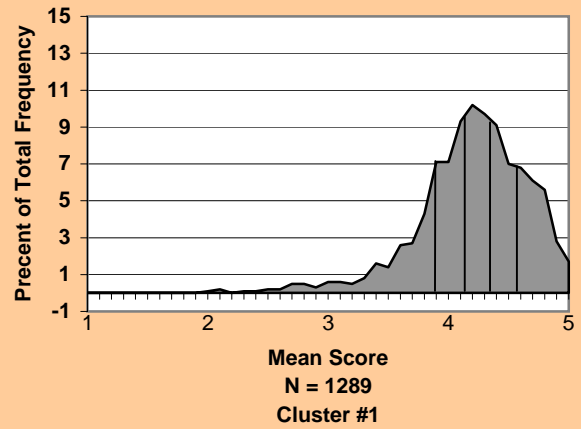


CLASS SIZE: LESS THAN 16

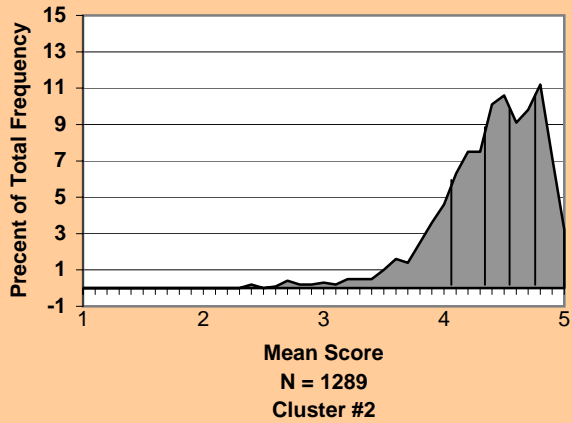
Instructor was an Effective Teacher



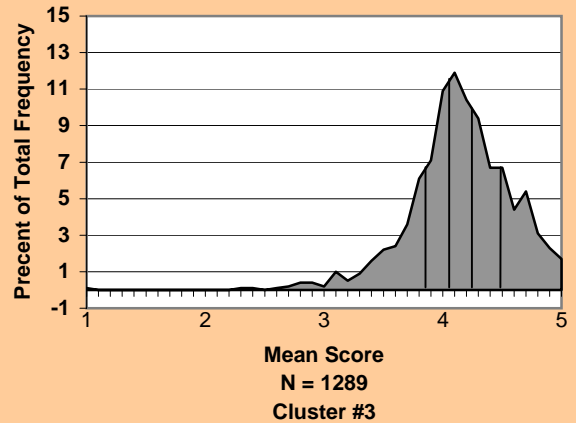
Preparation and Presentation of Course



Interaction With Students



Assessment of Student Performance

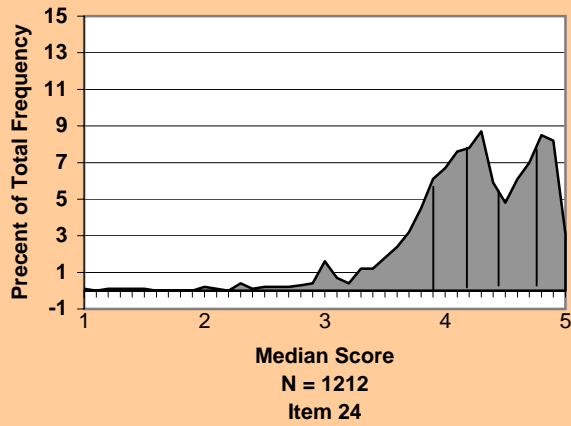


Norm Data for the College of Architecture

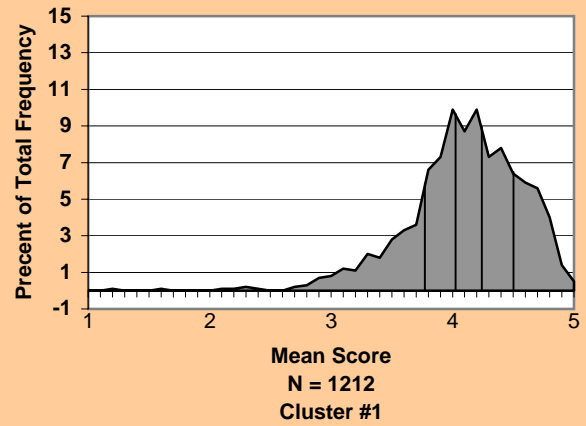


CLASS SIZE: 16 - 35

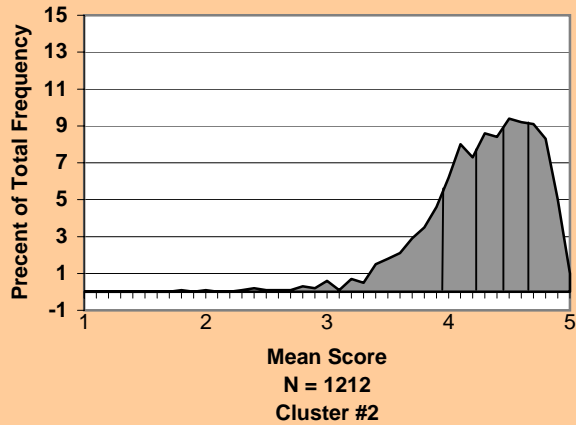
Instructor was an Effective Teacher



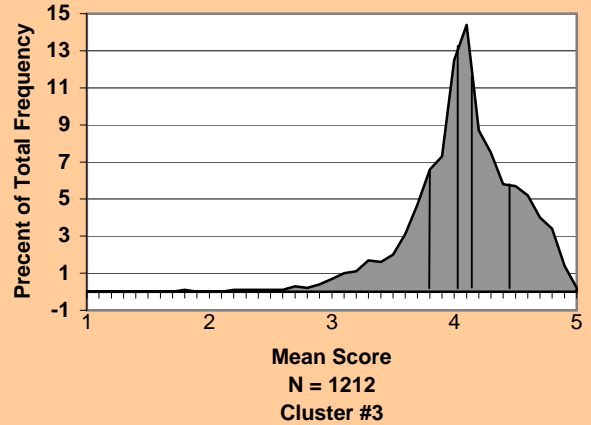
Preparation and Presentation of Course



Interaction With Students



Assessment of Student Performance

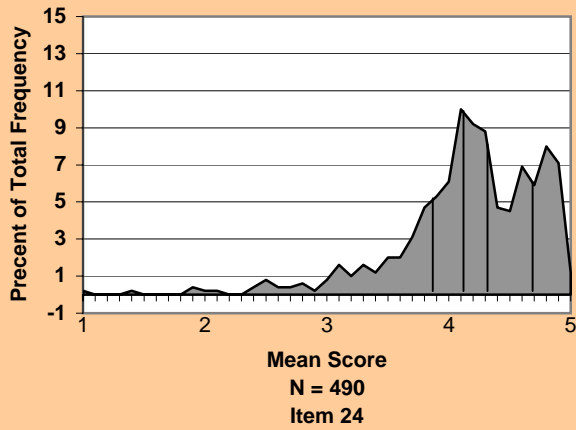


Norm Data for the College of Architecture

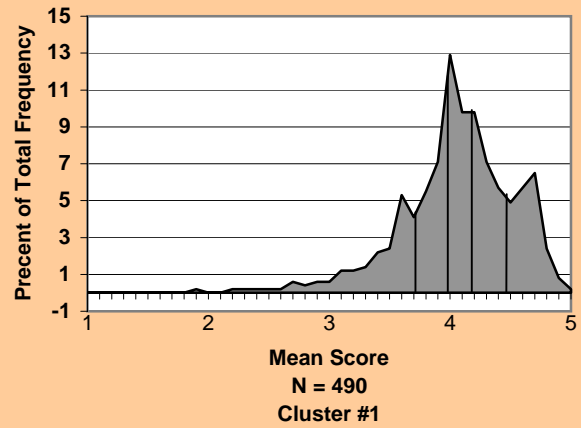


CLASS SIZE: 36 - 99

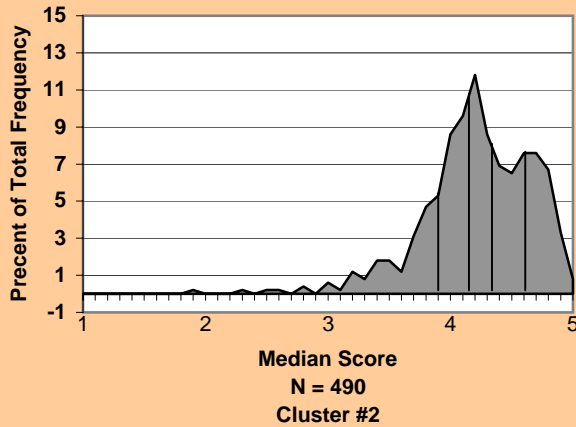
Instructor was an Effective Teacher



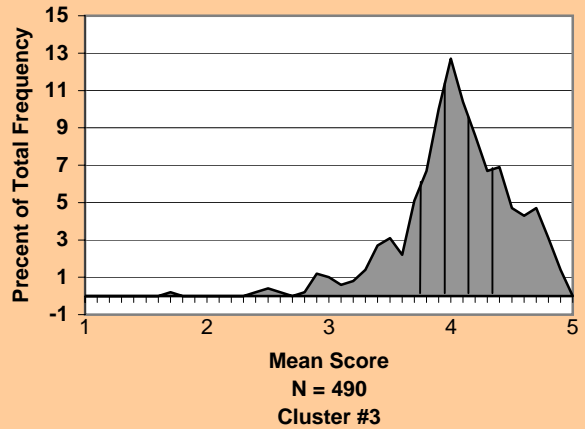
Preparation and Presentation of Course



Interaction With Students



Assessment of Student Performance

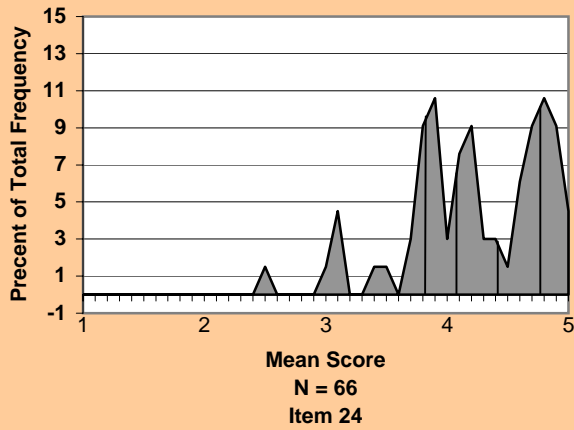


Norm Data for the College of Architecture

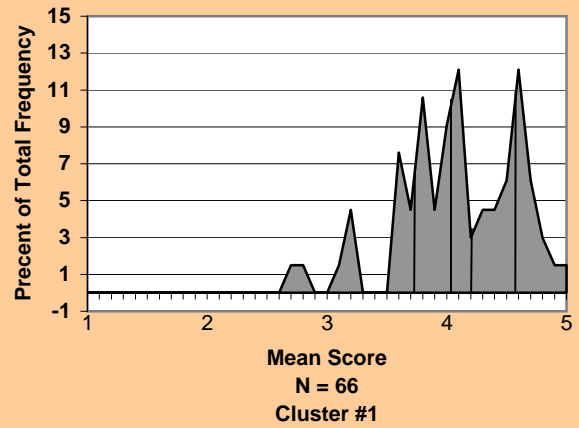


CLASS SIZE: Greater than 99

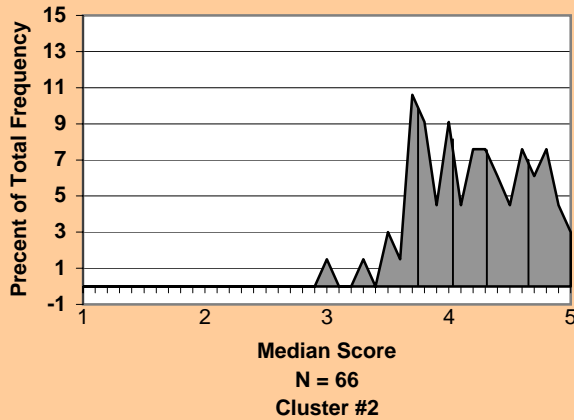
Instructor was an Effective Teacher



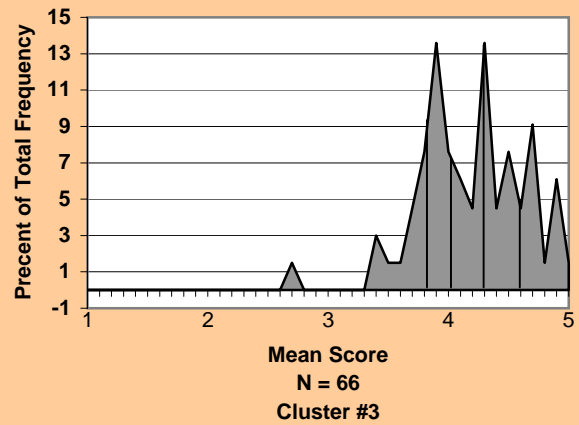
Preparation and Presentation of Course



Interaction With Students



Assessment of Student Performance



College of Computing 1986-2000

**NORMATIVE DATA FOR THE C.I.O.S.
(COURSE / INSTRUCTOR OPINION SURVEY)**



Illustration of Stability of Norm Data for the College of Computing



Class Size: Less than 16

Data	Item	N	Median	Cut1	Cut 2	Cut 3	Cut 4
40 Terms	24	386	4.45	3.98	4.23	4.54	4.75
41 Terms	24	390	4.45	3.99	4.23	4.50	4.74
40 Terms	C1	386	4.23	3.94	4.14	4.35	4.59
41 Terms	C1	390	4.22	3.94	4.13	4.33	4.59
40 Terms	C2	386	4.46	4.09	4.38	4.60	4.77
41 Terms	C2	390	4.45	4.10	4.38	4.59	4.76
40 Terms	C3	386	4.14	3.73	4.06	4.27	4.52
41 Terms	C3	390	4.14	3.73	4.06	4.26	4.52

Class Size: 16-35

Data	Item	N	Median	Cut1	Cut 2	Cut 3	Cut 4
40 Terms	24	744	4.21	3.79	4.08	4.31	4.61
41 Terms	24	795	4.19	3.77	4.07	4.29	4.60
40 Terms	C1	744	4.08	3.67	3.97	4.16	4.40
41 Terms	C1	795	4.07	3.65	3.95	4.16	4.39
40 Terms	C2	744	4.20	3.89	4.10	4.32	4.60
41 Terms	C2	795	4.19	3.88	4.08	4.30	4.60
40 Terms	C3	744	4.00	3.61	3.90	4.10	4.29
41 Terms	C3	795	3.99	3.56	3.89	4.09	4.29

Illustration of Stability of Norm Data for the College of Computing



Class Size: 36-99

Data	Item	N	Median	Cut1	Cut 2	Cut 3	Cut 4
40 Terms	24	766	4.14	3.73	4.03	4.24	4.48
41 Terms	24	829	4.12	3.73	4.00	4.22	4.47
40 Terms	C1	766	4.04	3.69	3.93	4.11	4.29
41 Terms	C1	829	4.01	3.67	3.91	4.09	4.28
40 Terms	C2	766	4.16	3.88	4.08	4.25	4.44
41 Terms	C2	829	4.14	3.85	4.07	4.23	4.43
40 Terms	C3	766	4.01	3.64	3.92	4.09	4.27
41 Terms	C3	829	3.99	3.58	3.89	4.08	4.26

Class Size: Greater than 99

Data	Item	N	Median	Cut1	Cut 2	Cut 3	Cut 4
40 Terms	24	96	3.54	2.94	3.33	3.71	4.02
41 Terms	24	99	3.54	3.97	3.34	3.71	4.02
40 Terms	C1	96	3.52	3.18	3.43	3.58	3.91
41 Terms	C1	99	3.52	3.19	3.42	3.59	3.91
40 Terms	C2	96	3.62	3.19	3.51	3.71	4.01
41 Terms	C2	99	3.61	3.17	3.50	3.71	4.01
40 Terms	C3	96	3.58	3.21	3.50	3.64	3.85
41 Terms	C3	99	3.57	3.13	3.49	3.64	3.89

LEGEND

C1 is Preparation & Presentation = Items 10, 11, 13, 15, 18
 C2 is Interaction with Students = Items 14, 19, 20, 21, 22
 C3 is Assessment of Student Performance = Items 12, 16, 17, 23
 Item 24 = The instructor was an effective teacher.

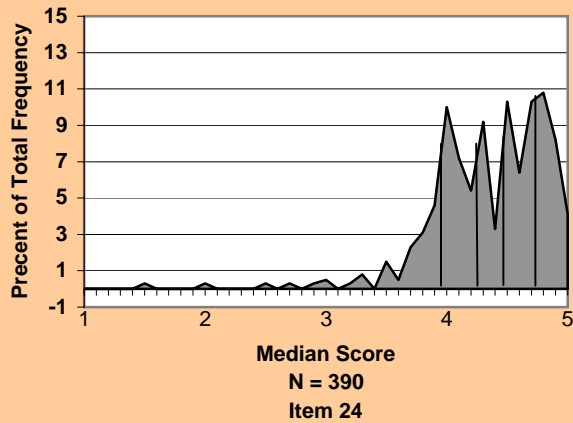
Note: In the "Data" column, "Terms" refers to quarters for every term previous to Fall 1999 and to semesters for every term starting with Fall 1999.

Norm Data for the College of Computing

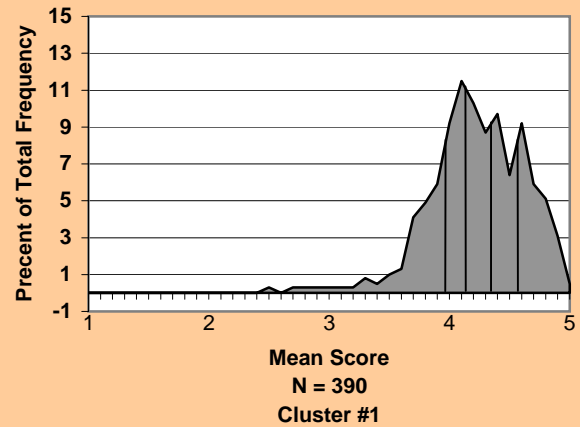


CLASS SIZE: LESS THAN 16

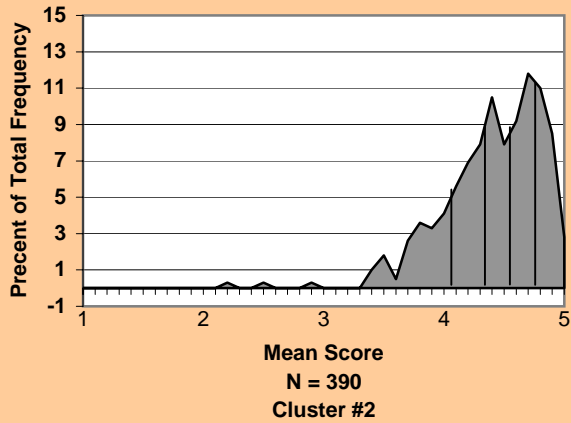
Instructor was an Effective Teacher



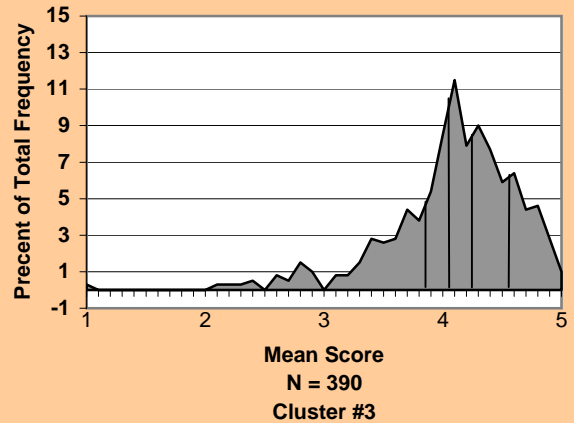
Preparation and Presentation of Course



Interaction With Students



Assessment of Student Performance

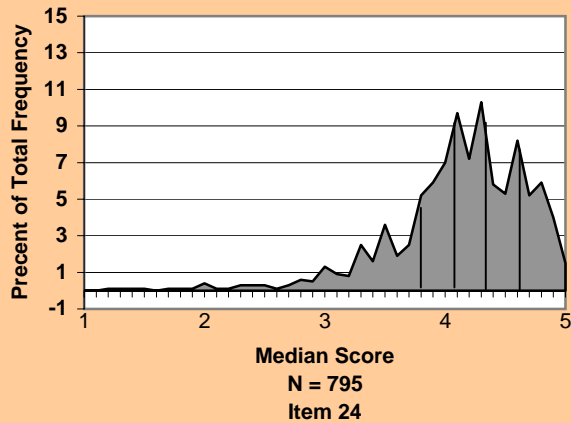


Norm Data for the College of Computing

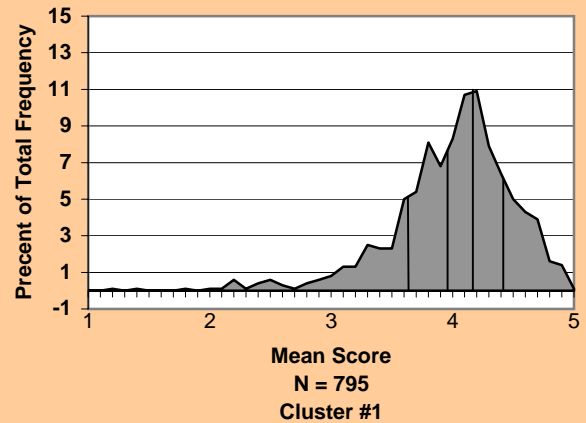


CLASS SIZE: 16 - 35

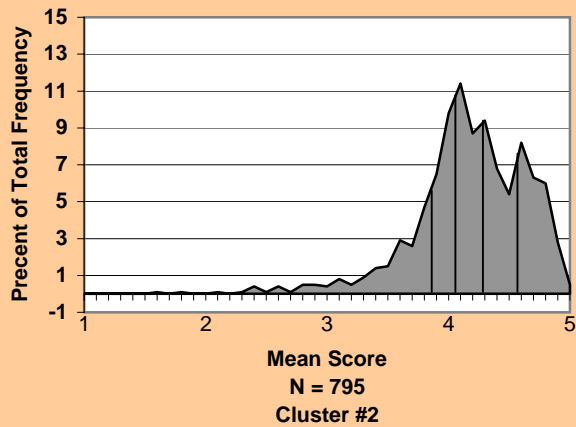
Instructor was an Effective Teacher



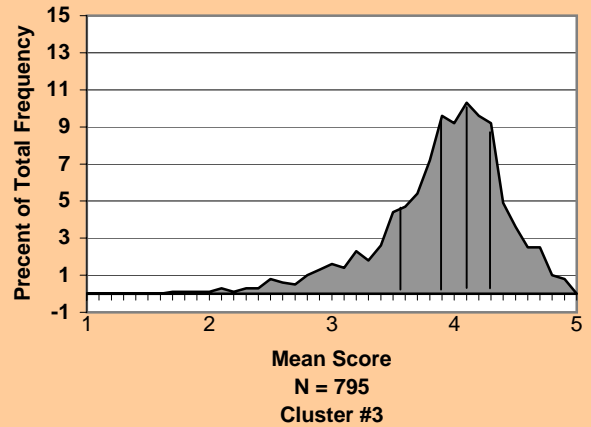
Preparation and Presentation of Course



Interaction With Students



Assessment of Student Performance

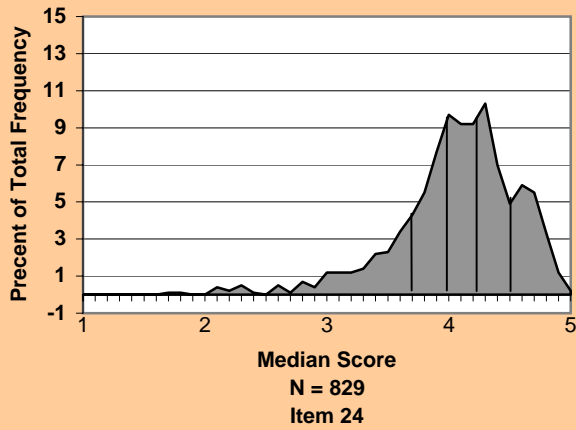


Norm Data for the College of Computing

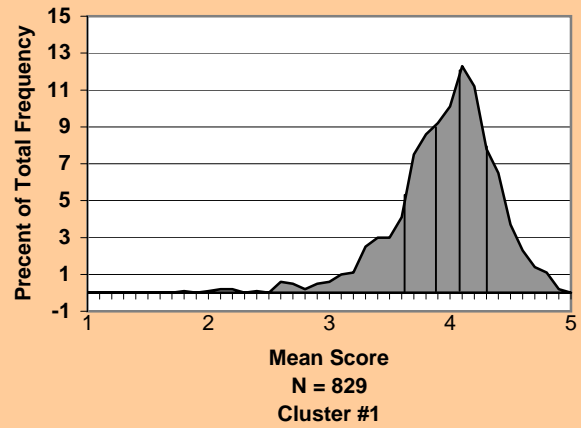


CLASS SIZE: 36 - 99

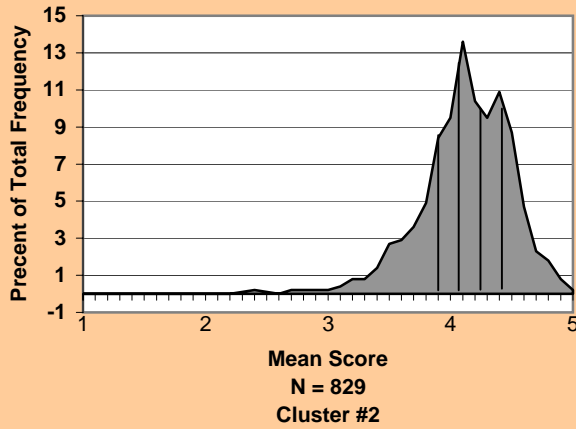
Instructor was an Effective Teacher



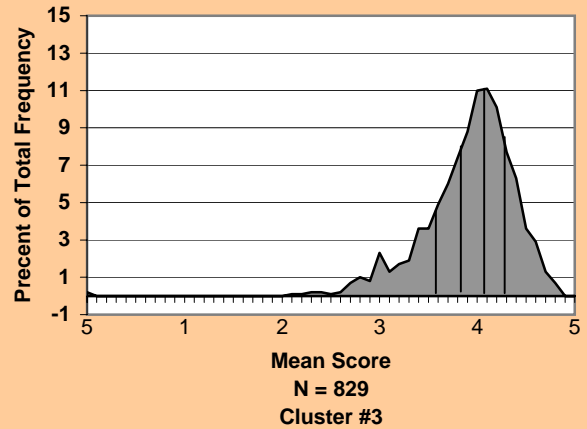
Preparation and Presentation of Course



Interaction With Students



Assessment of Student Performance

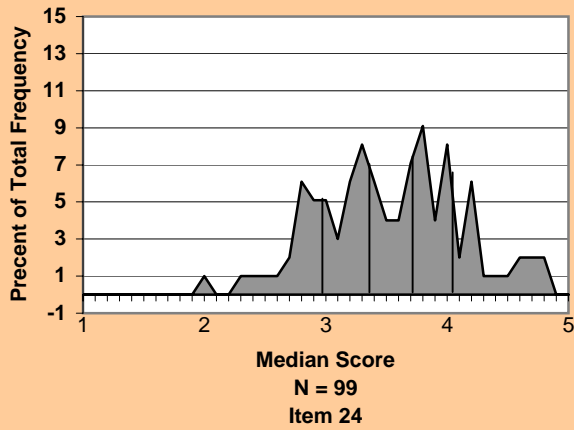


Norm Data for the College of Computing

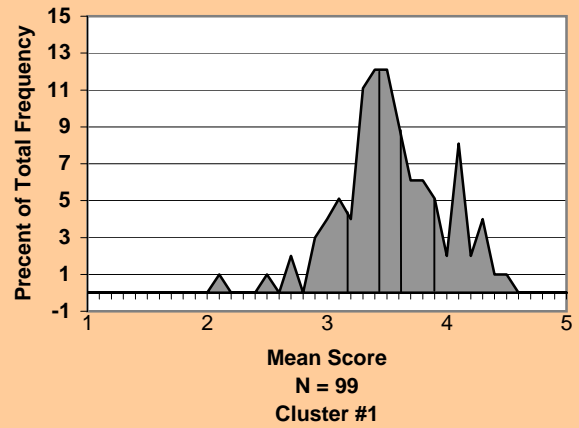


CLASS SIZE: Greater than 99

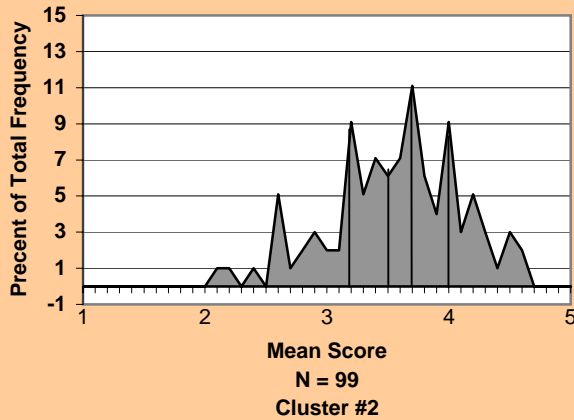
Instructor was an Effective Teacher



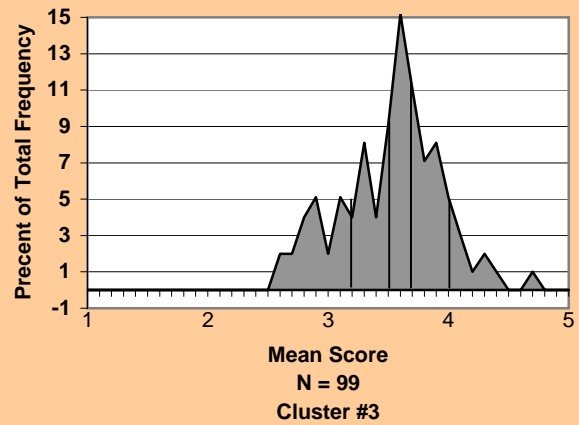
Preparation and Presentation of Course



Interaction With Students



Assessment of Student Performance



College of Engineering 1986-2000

**NORMATIVE DATA FOR THE C.I.O.S.
(COURSE / INSTRUCTOR OPINION SURVEY)**



Illustration of Stability of Norm Data for the College of Engineering



Class Size: Less than 16

Data	Item	N	Median	Cut1	Cut 2	Cut 3	Cut 4
40 Terms	24	3191	4.30	3.92	4.16	4.48	4.74
41 Terms	24	3231	4.30	3.92	4.16	4.48	4.74
40 Terms	C1	3191	4.17	3.82	4.06	4.27	4.54
41 Terms	C1	3231	4.17	3.81	4.06	4.27	4.54
40 Terms	C2	3191	4.37	4.02	4.27	4.47	4.68
41 Terms	C2	3231	4.37	4.01	4.27	4.47	4.68
40 Terms	C3	3191	4.12	3.79	4.03	4.20	4.46
41 Terms	C3	3231	4.12	3.79	4.03	4.20	4.46

Class Size: 16-35

Data	Item	N	Median	Cut1	Cut 2	Cut 3	Cut 4
40 Terms	24	5456	4.21	3.85	4.10	4.33	4.63
41 Terms	24	5616	4.21	3.85	4.10	4.32	4.63
40 Terms	C1	5456	4.10	3.76	4.00	4.19	4.40
41 Terms	C1	5616	4.10	3.75	4.00	4.18	4.40
40 Terms	C2	5456	4.24	3.92	4.15	4.34	4.56
41 Terms	C2	5616	4.24	3.92	4.15	4.34	4.56
40 Terms	C3	5456	4.04	3.73	3.95	4.11	4.31
41 Terms	C3	5616	4.04	3.72	3.96	4.12	4.31

Illustration of Stability of Norm Data for the College of Engineering



Class Size: 36-99

Data	Item	N	Median	Cut1	Cut 2	Cut 3	Cut 4
40 Terms	24	6310	4.12	3.75	4.02	4.22	4.50
41 Terms	24	6436	4.12	3.74	4.00	4.22	4.50
40 Terms	C1	6310	4.02	3.68	3.92	4.10	4.29
41 Terms	C1	6436	4.02	3.68	3.93	4.10	4.29
40 Terms	C2	6310	4.11	3.79	4.02	4.19	4.41
41 Terms	C2	6436	4.11	3.79	4.02	4.19	4.41
40 Terms	C3	6310	3.99	3.65	3.91	4.06	4.22
41 Terms	C3	6436	3.99	3.65	3.90	4.06	4.22

Class Size: Greater than 99

Data	Item	N	Median	Cut1	Cut 2	Cut 3	Cut 4
40 Terms	24	359	4.00	3.56	3.89	4.09	4.40
41 Terms	24	368	4.00	3.56	3.89	4.10	4.40
40 Terms	C1	359	3.89	3.52	3.81	3.99	4.22
41 Terms	C1	368	3.89	3.52	3.81	3.99	4.21
40 Terms	C2	359	4.01	3.67	3.91	4.10	4.35
41 Terms	C2	368	4.01	3.68	3.91	4.10	4.35
40 Terms	C3	359	3.93	3.59	3.84	4.00	4.13
41 Terms	C3	368	3.93	3.59	3.84	3.99	4.13

LEGEND

C1 is Preparation & Presentation = Items 10, 11, 13, 15, 18
 C2 is Interaction with Students = Items 14, 19, 20, 21, 22
 C3 is Assessment of Student Performance = Items 12, 16, 17, 23
 Item 24 = The instructor was an effective teacher.

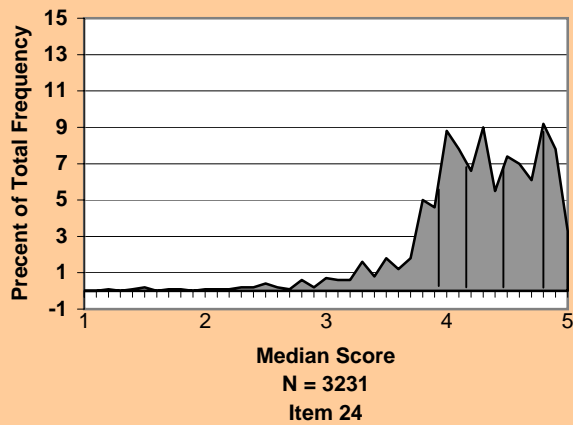
Note: In the "Data" column, "Terms" refers to quarters for every term previous to Fall 1999 and to semesters for every term starting with Fall 1999.

Norm Data for the College of Engineering

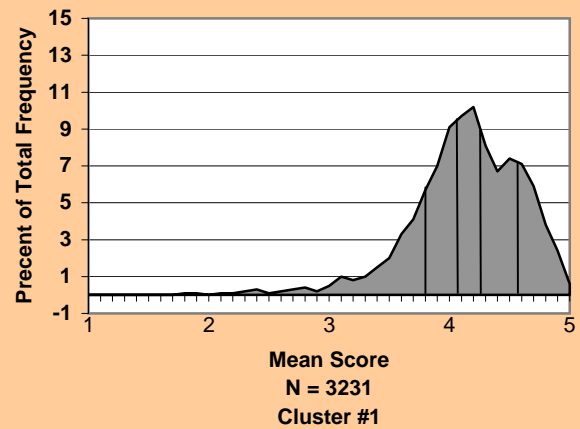


CLASS SIZE: LESS THAN 16

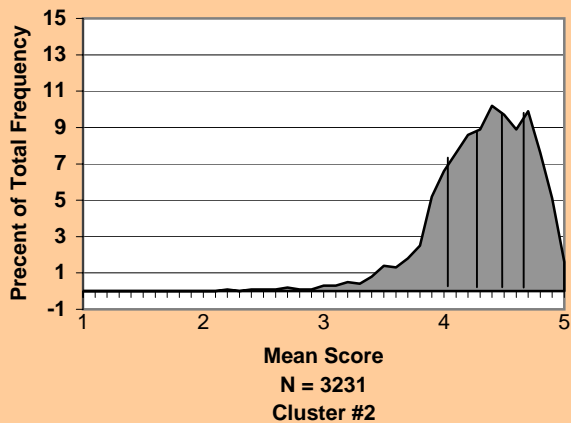
Instructor was an Effective Teacher



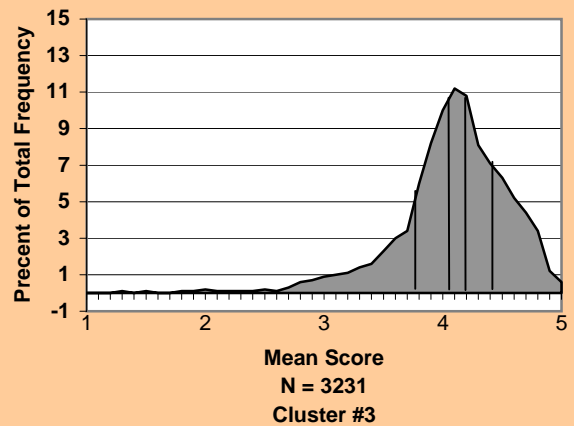
Preparation and Presentation of Course



Interaction With Students



Assessment of Student Performance

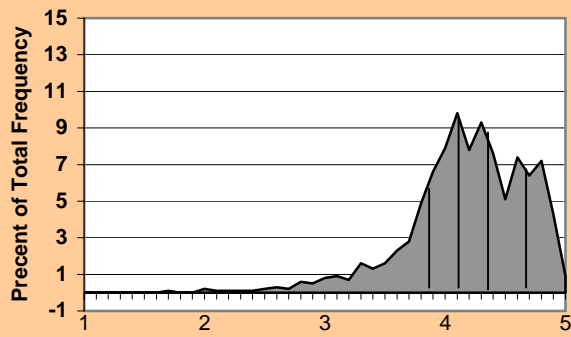


Norm Data for the College of Engineering



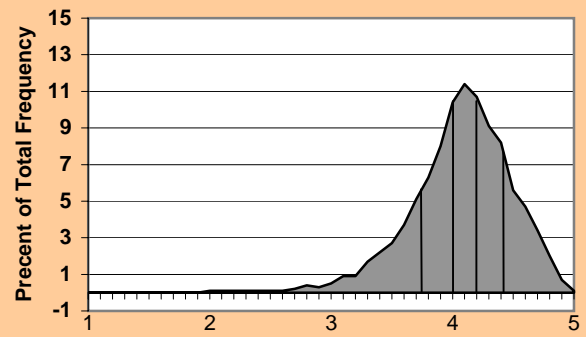
CLASS SIZE: 16 - 35

Instructor was an Effective Teacher



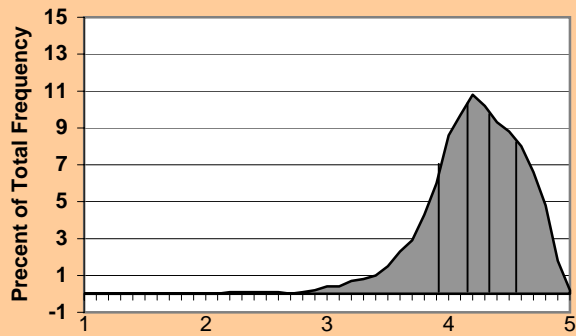
Median Score
N = 5616
Item 24

Preparation and Presentation of Course



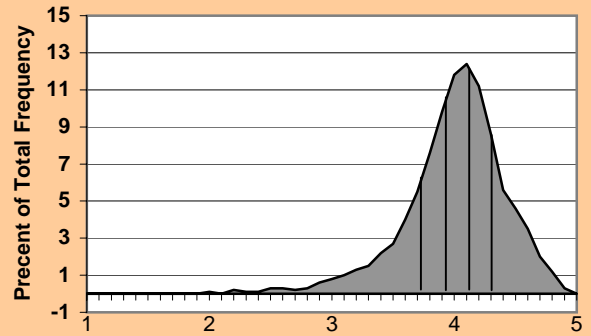
Mean Score
N = 5616
Cluster #1

Interaction With Students



Mean Score
N = 5616
Cluster #2

Assessment of Student Performance



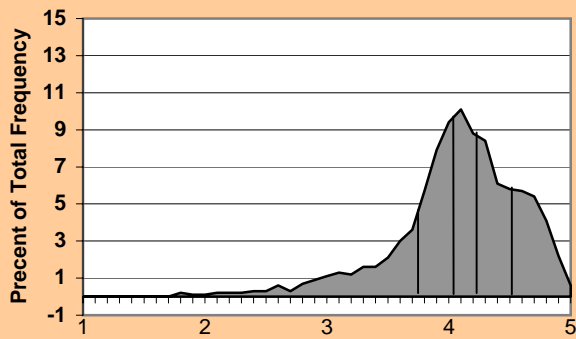
Mean Score
N = 5616
Cluster #3

Norm Data for the College of Engineering



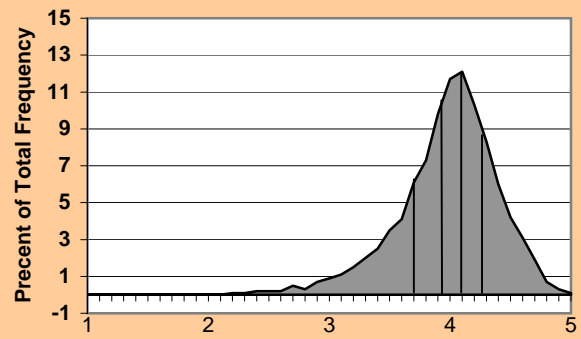
CLASS SIZE: 36 - 99

Instructor was an Effective Teacher



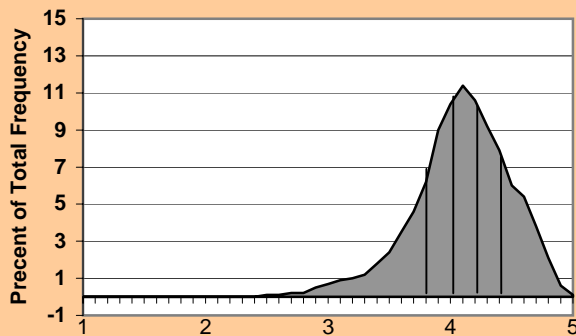
Median Score
N = 6436
Item 24

Preparation and Presentation of Course



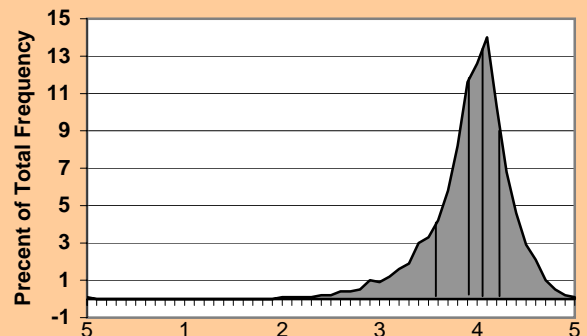
Mean Score
N = 6436
Cluster #1

Interaction With Students



Mean Score
N = 6436
Cluster #2

Assessment of Student Performance



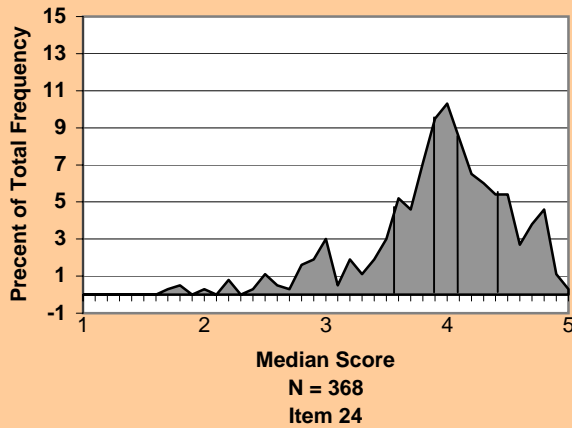
Mean Score
N = 6436
Cluster #3

Norm Data for the College of Engineering

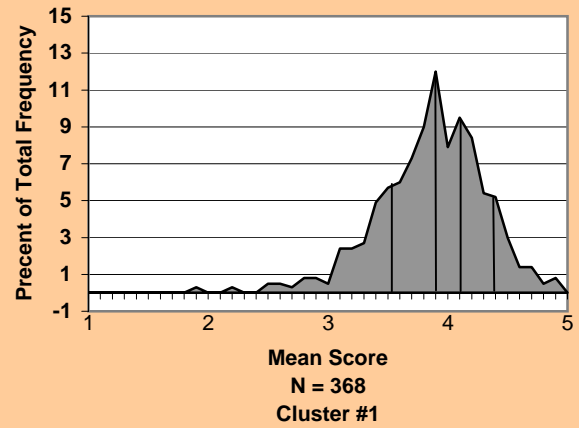


CLASS SIZE: Greater than 99

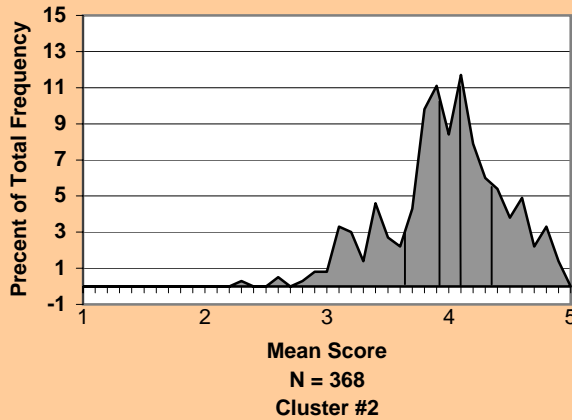
Instructor was an Effective Teacher



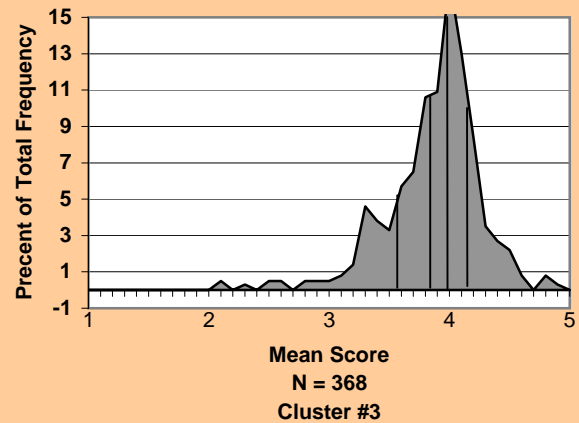
Preparation and Presentation of Course



Interaction With Students



Assessment of Student Performance



Ivan Allen College 1986-2000

**NORMATIVE DATA FOR THE C.I.O.S.
(COURSE / INSTRUCTOR OPINION SURVEY)**



Illustration of Stability of Norm Data for the Ivan Allen College



Class Size: Less than 16

Data	Item	N	Median	Cut1	Cut 2	Cut 3	Cut 4
40 Terms	24	1625	4.54	4.08	4.38	4.67	4.83
41 Terms	24	1633	4.54	4.08	4.38	4.67	4.83
40 Terms	C1	1625	4.36	4.01	4.24	4.47	4.67
41 Terms	C1	1633	4.36	4.01	4.25	4.47	4.67
40 Terms	C2	1625	4.54	4.19	4.43	4.62	4.80
41 Terms	C2	1633	4.54	4.19	4.43	4.62	4.80
40 Terms	C3	1625	4.29	4.00	4.18	4.39	4.65
41 Terms	C3	1633	4.29	4.00	4.18	4.39	4.64

Class Size: 16-35

Data	Item	N	Median	Cut1	Cut 2	Cut 3	Cut 4
40 Terms	24	4537	4.41	4.01	4.28	4.55	4.75
41 Terms	24	4675	4.40	4.02	4.28	4.55	4.75
40 Terms	C1	4537	4.24	3.95	4.15	4.32	4.52
41 Terms	C1	4675	4.24	3.95	4.15	4.33	4.52
40 Terms	C2	4537	4.41	4.10	4.31	4.49	4.67
41 Terms	C2	4675	4.41	4.10	4.32	4.49	4.67
40 Terms	C3	4537	4.20	3.95	4.12	4.27	4.50
41 Terms	C3	4675	4.20	3.95	4.12	4.28	4.49

Illustration of Stability of Norm Data for the Ivan Allen College

Class Size: 36-99

Data	Item	N	Median	Cut1	Cut 2	Cut 3	Cut 4
40 Terms	24	3413	4.27	3.89	4.15	4.38	4.65
41 Terms	24	3469	4.27	4.90	4.16	4.38	4.65
40 Terms	C1	3413	4.14	3.83	4.05	4.22	4.41
41 Terms	C1	3469	4.14	3.83	4.05	4.22	4.41
40 Terms	C2	3413	4.29	3.98	4.19	4.37	4.57
41 Terms	C2	3469	4.29	3.98	4.19	4.37	4.57
40 Terms	C3	3413	4.08	3.82	4.01	4.15	4.33
41 Terms	C3	3469	4.09	3.82	4.01	4.15	4.33

Class Size: Greater than 99

Data	Item	N	Median	Cut1	Cut 2	Cut 3	Cut 4
40 Terms	24	557	4.15	3.77	4.03	4.25	4.55
41 Terms	24	575	4.15	3.76	4.03	4.25	4.54
40 Terms	C1	557	4.08	3.73	3.97	4.17	4.36
41 Terms	C1	575	4.08	3.73	3.97	4.16	4.35
40 Terms	C2	557	4.08	3.74	4.00	4.13	4.36
41 Terms	C2	575	4.08	3.73	4.00	4.13	4.36
40 Terms	C3	557	4.03	3.76	3.97	4.08	4.22
41 Terms	C3	575	4.03	3.75	3.96	4.08	4.22

LEGEND

C1 is Preparation & Presentation = Items 10, 11, 13, 15, 18
 C2 is Interaction with Students = Items 14, 19, 20, 21, 22
 C3 is Assessment of Student Performance = Items 12, 16, 17, 23
 Item 24 = The instructor was an effective teacher.

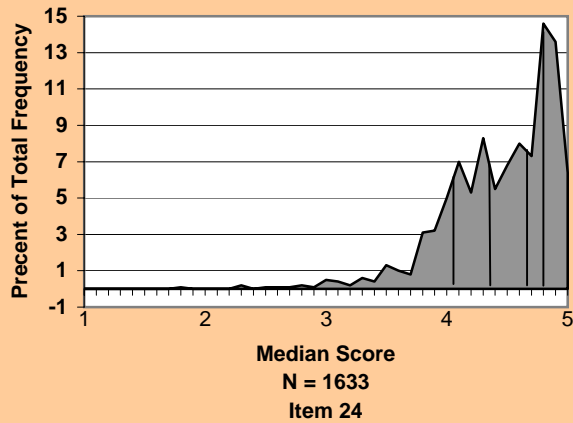
Note: In the "Data" column, "Terms" refers to quarters for every term previous to Fall 1999 and to semesters for every term starting with Fall 1999.

Norm Data for the Ivan Allen College

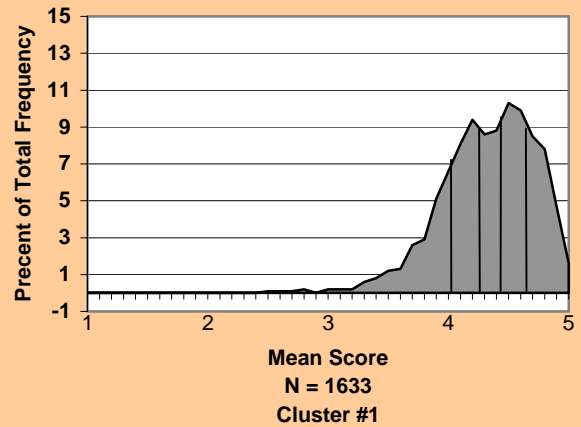


CLASS SIZE: LESS THAN 16

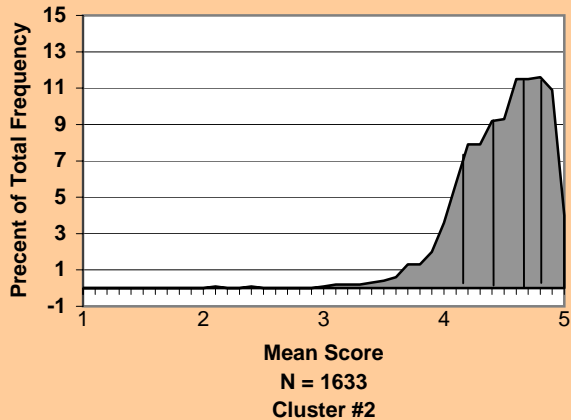
Instructor was an Effective Teacher



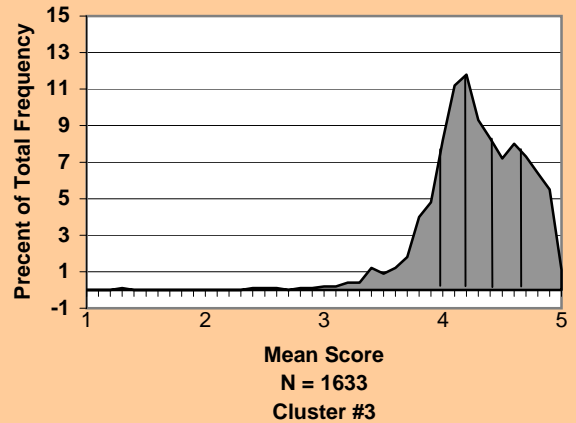
Preparation and Presentation of Course



Interaction With Students



Assessment of Student Performance

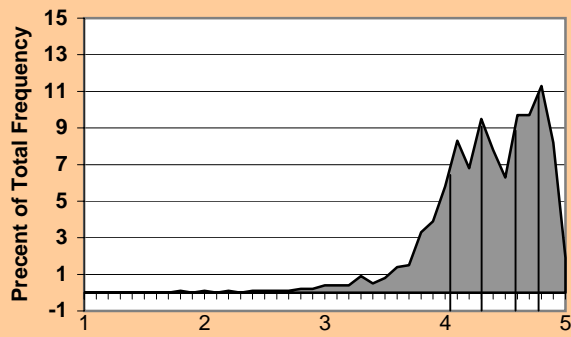


Norm Data for the Ivan Allen College



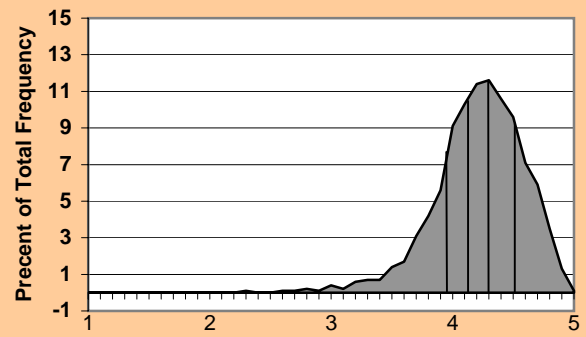
CLASS SIZE: 16 - 35

Instructor was an Effective Teacher



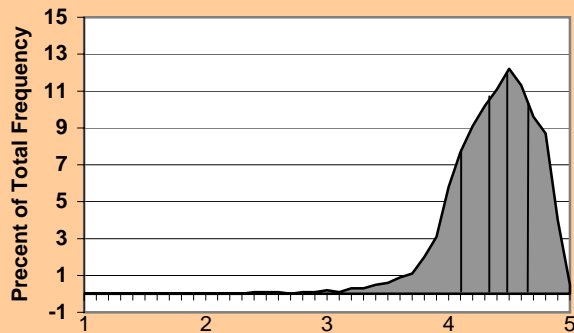
N = 4675
Item 24

Preparation and Presentation of Course



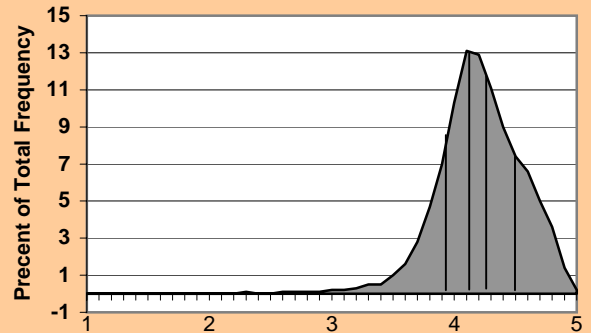
N = 4675
Cluster #1

Interaction With Students



N = 4675
Cluster #2

Assessment of Student Performance



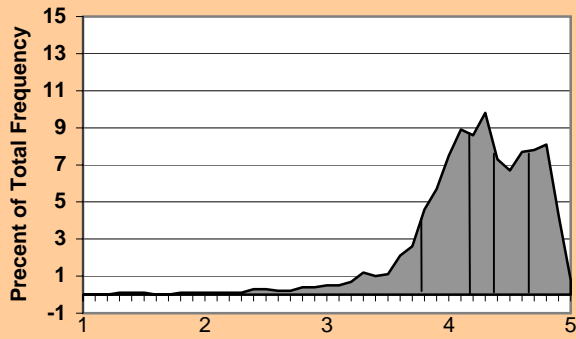
N = 4675
Cluster #3

Norm Data for the Ivan Allen College



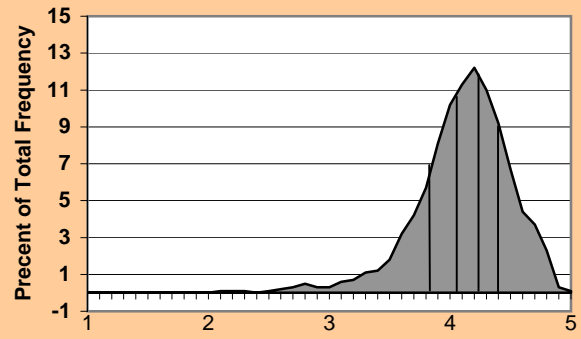
CLASS SIZE: 36 - 99

Instructor was an Effective Teacher



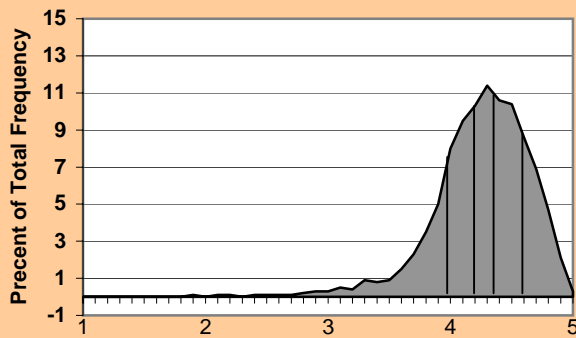
Median Score
N = 3469
Item 24

Preparation and Presentation of Course



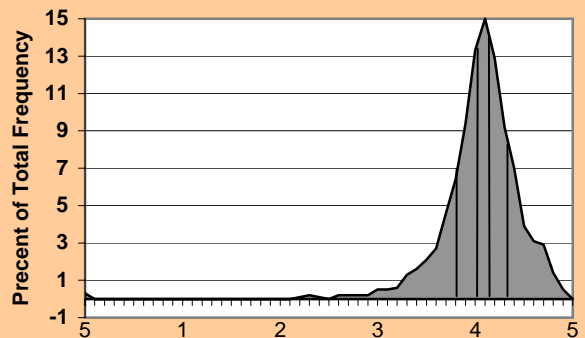
Mean Score
N = 3469
Cluster #1

Interaction With Students



Mean Score
N = 3469
Cluster #2

Assessment of Student Performance



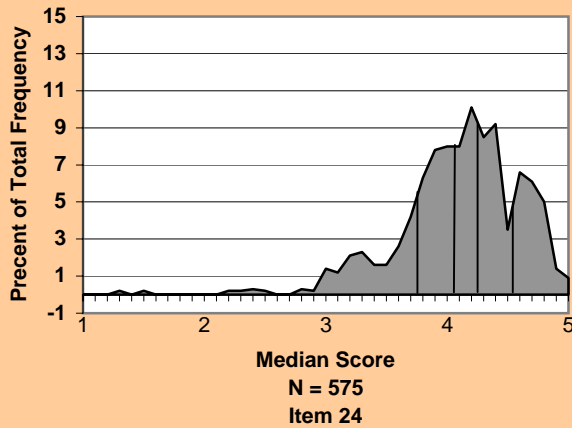
Mean Score
N = 3469
Cluster #3

Norm Data for the Ivan Allen College

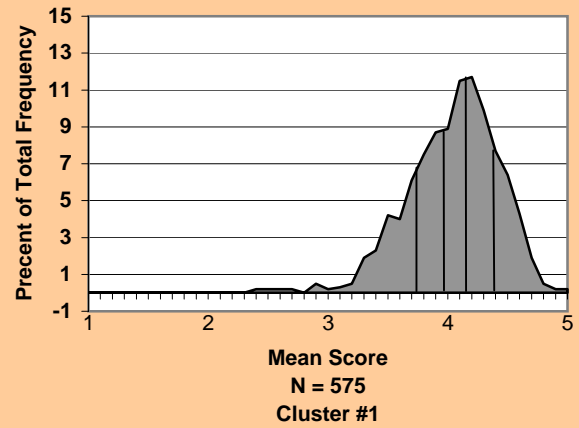


CLASS SIZE: Greater than 99

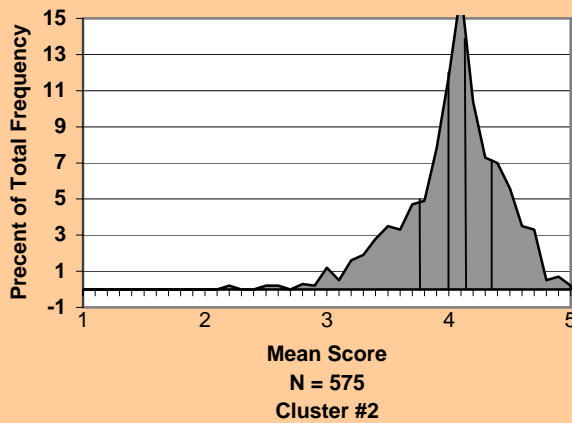
Instructor was an Effective Teacher



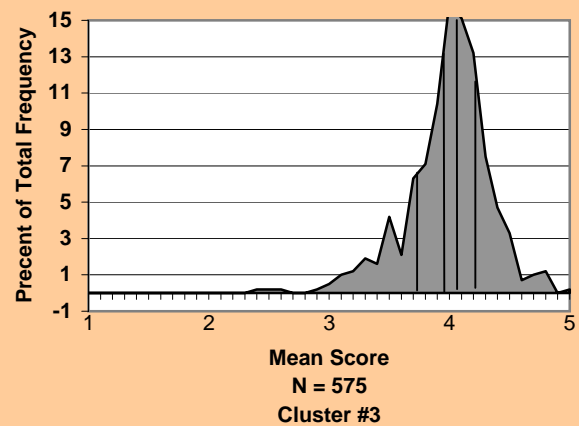
Preparation and Presentation of Course



Interaction With Students



Assessment of Student Performance



College of Management 1986-2000

**NORMATIVE DATA FOR THE C.I.O.S.
(COURSE / INSTRUCTOR OPINION SURVEY)**



Illustration of Stability of Norm Data for the College of Management



Class Size: Less than 16

Data	Item	N	Median	Cut1	Cut 2	Cut 3	Cut 4
40 Terms	24	16	4.22	3.49	4.08	4.38	4.66
41 Terms	24	17	4.27	3.60	4.10	4.46	4.72
40 Terms	C1	16	4.24	3.53	4.10	4.30	4.61
41 Terms	C1	17	4.27	3.55	4.15	4.36	4.61
40 Terms	C2	16	4.37	4.08	4.24	4.37	4.78
41 Terms	C2	17	4.38	3.97	4.28	4.40	4.77
40 Terms	C3	16	4.08	3.79	3.98	4.27	4.65
41 Terms	C3	17	4.15	3.82	3.99	4.36	4.64

Class Size: 16-35

Data	Item	N	Median	Cut1	Cut 2	Cut 3	Cut 4
40 Terms	24	57	4.50	4.07	4.29	4.60	4.81
41 Terms	24	69	4.42	4.05	4.26	4.56	4.77
40 Terms	C1	57	4.41	4.09	4.26	4.45	4.60
41 Terms	C1	69	4.40	4.08	4.28	4.45	4.60
40 Terms	C2	57	4.38	4.17	4.31	4.51	4.78
41 Terms	C2	69	4.38	4.17	4.31	4.51	4.78
40 Terms	C3	57	4.26	3.91	4.18	4.33	4.56
41 Terms	C3	69	4.26	3.95	4.17	4.32	4.56

Illustration of Stability of Norm Data for the College of Management



Class Size: 36-99

Data	Item	N	Median	Cut1	Cut 2	Cut 3	Cut 4
40 Terms	24	183	4.25	3.82	4.13	4.30	4.64
41 Terms	24	231	4.20	3.74	4.10	4.28	4.58
40 Terms	C1	183	4.13	3.76	4.06	4.24	4.43
41 Terms	C1	231	4.12	3.73	3.93	4.20	4.41
40 Terms	C2	183	4.33	4.02	4.24	4.41	4.61
41 Terms	C2	231	4.30	3.99	4.18	4.38	4.58
40 Terms	C3	183	4.07	3.67	3.96	4.17	4.40
41 Terms	C3	231	4.05	3.66	3.94	4.14	4.33

Class Size: Greater than 99

Data	Item	N	Median	Cut1	Cut 2	Cut 3	Cut 4
40 Terms	24	21	4.00	2.86	3.77	4.03	4.44
41 Terms	24	28	3.92	2.81	3.71	4.01	4.39
40 Terms	C1	21	3.96	3.13	3.78	4.02	4.31
41 Terms	C1	28	3.85	3.04	3.71	3.98	4.27
40 Terms	C2	21	4.04	2.95	3.74	4.06	4.35
41 Terms	C2	28	4.00	2.88	3.62	4.06	4.40
40 Terms	C3	21	3.99	3.31	3.85	4.06	4.36
41 Terms	C3	28	3.97	3.22	3.82	4.05	4.31

LEGEND

C1 is Preparation & Presentation = Items 10, 11, 13, 15, 18
 C2 is Interaction with Students = Items 14, 19, 20, 21, 22
 C3 is Assessment of Student Performance = Items 12, 16, 17, 23
 Item 24 = The instructor was an effective teacher.

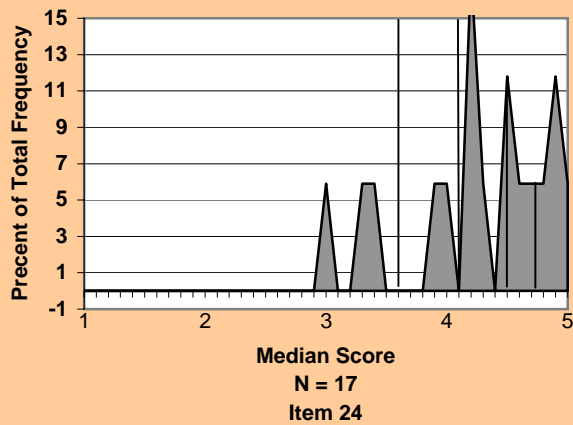
Note: In the "Data" column, "Terms" refers to quarters for every term previous to Fall 1999 and to semesters for every term starting with Fall 1999.

Norm Data for the College of Management

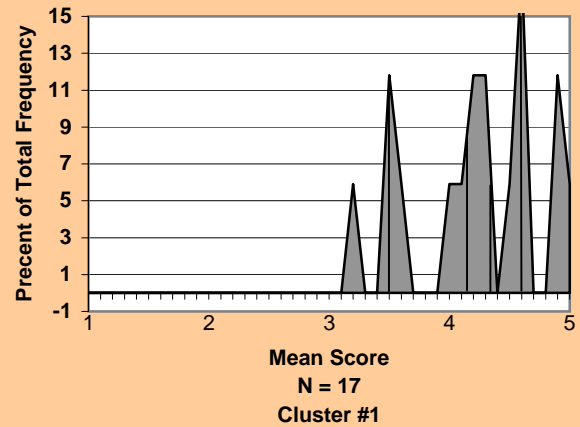


CLASS SIZE: LESS THAN 16

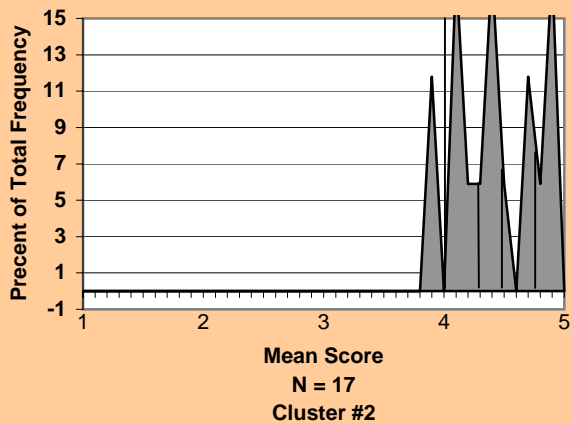
Instructor was an Effective Teacher



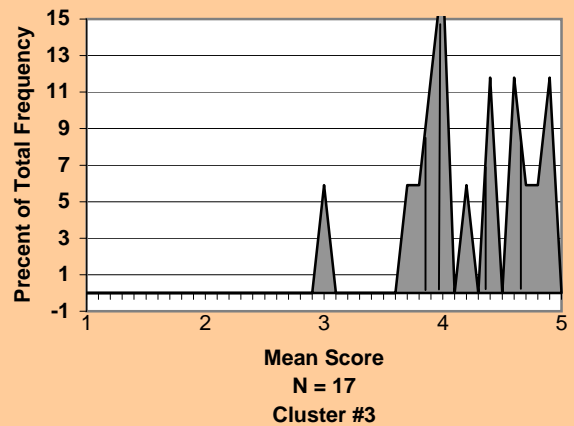
Preparation and Presentation of Course



Interaction With Students



Assessment of Student Performance

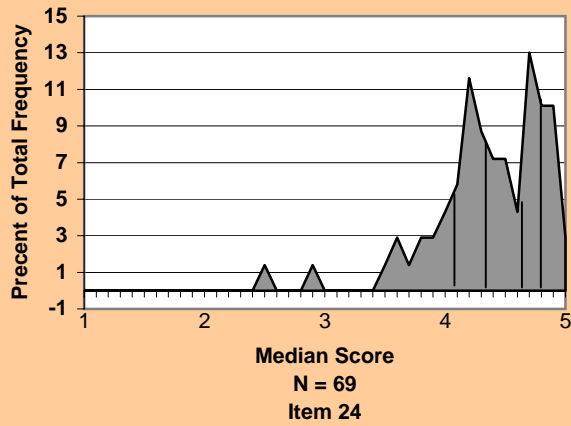


Norm Data for the College of Management

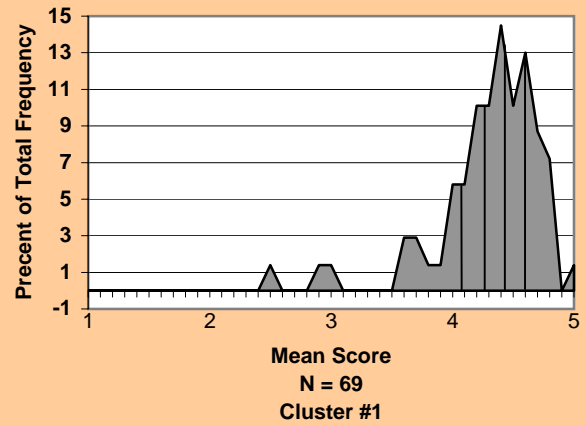


CLASS SIZE: 16 - 35

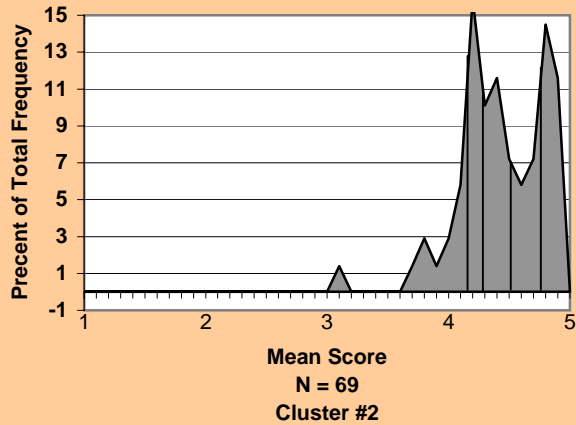
Instructor was an Effective Teacher



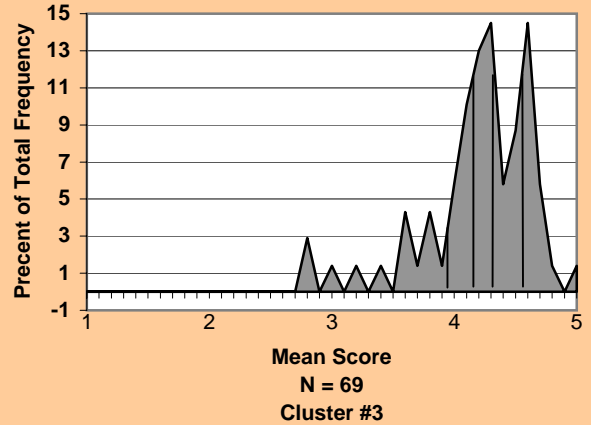
Preparation and Presentation of Course



Interaction With Students



Assessment of Student Performance

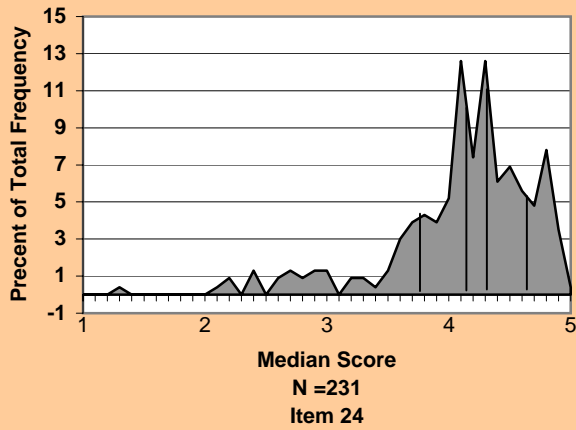


Norm Data for the College of Management

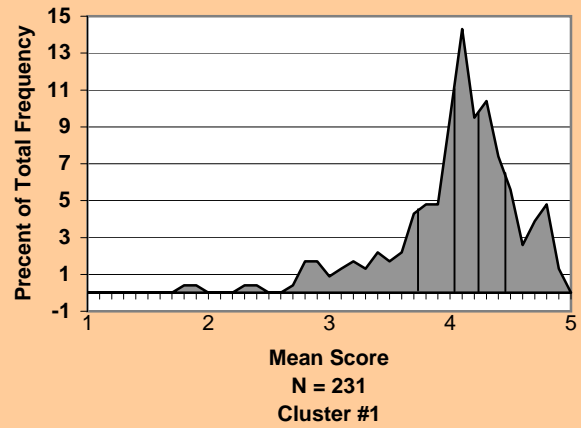


CLASS SIZE: 36 - 99

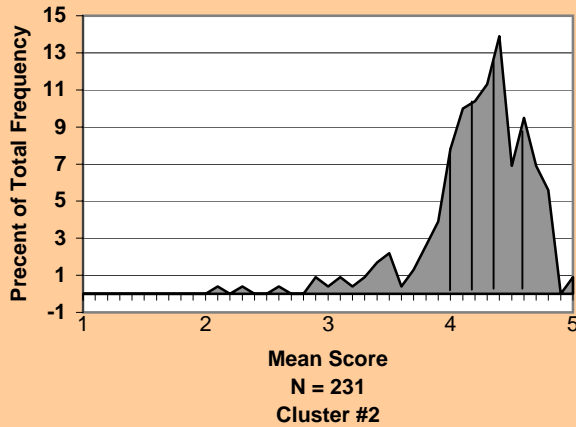
Instructor was an Effective Teacher



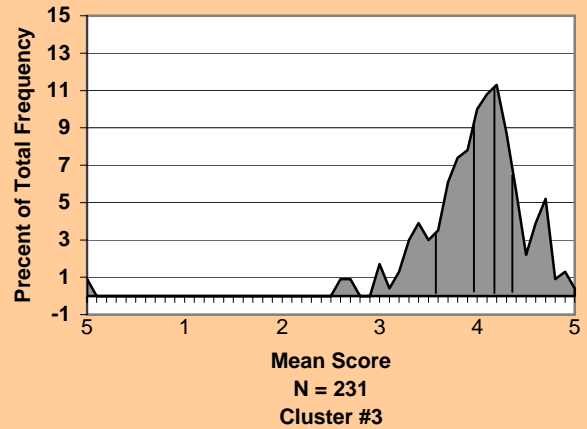
Preparation and Presentation of Course



Interaction With Students



Assessment of Student Performance

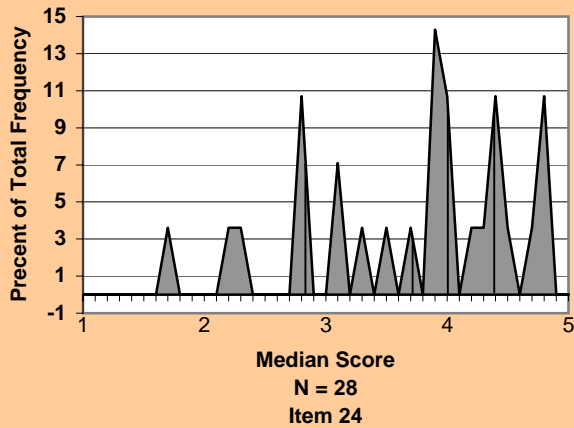


Norm Data for the College of Management

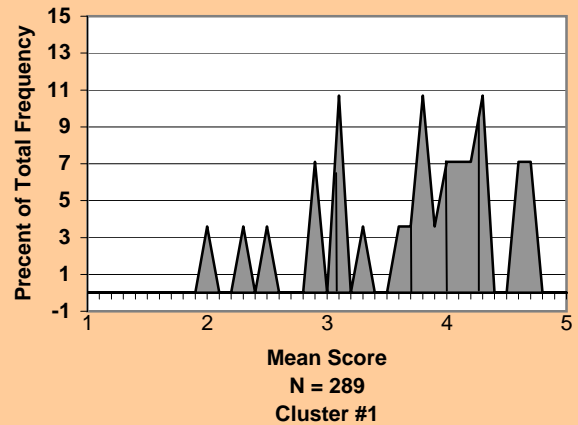


CLASS SIZE: Greater than 99

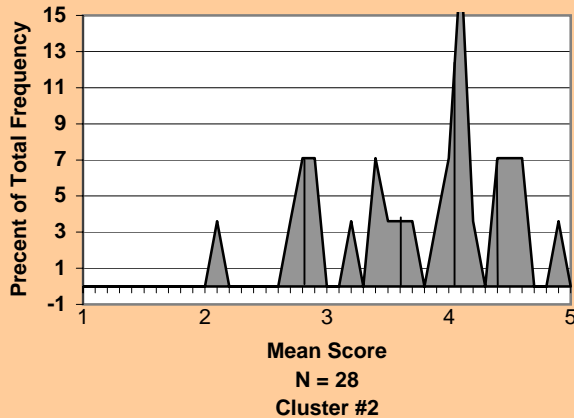
Instructor was an Effective Teacher



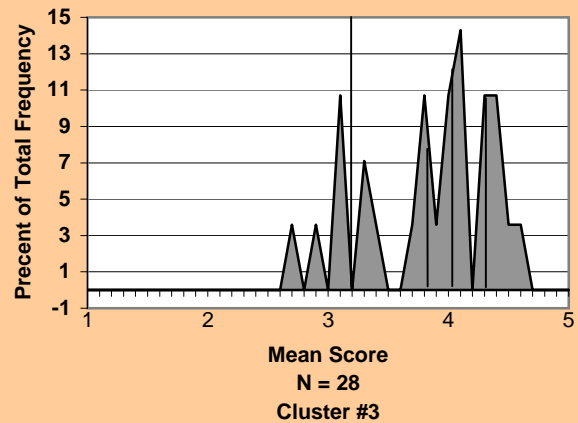
Preparation and Presentation of Course



Interaction With Students



Assessment of Student Performance



College of Sciences 1986-2000

**NORMATIVE DATA FOR THE C.I.O.S.
(COURSE / INSTRUCTOR OPINION SURVEY)**



Illustration of Stability of Norm Data for the College of Sciences



Class Size: Less than 16

Data	Item	N	Median	Cut1	Cut 2	Cut 3	Cut 4
40 Terms	24	1373	4.33	3.89	4.19	4.49	4.79
41 Terms	24	1381	4.33	3.89	4.19	4.49	4.79
40 Terms	C1	1373	4.19	3.80	4.07	4.32	4.60
41 Terms	C1	1381	4.19	3.80	4.07	4.31	4.60
40 Terms	C2	1373	4.38	3.97	4.25	4.49	4.70
41 Terms	C2	1381	4.38	3.97	4.25	4.48	4.69
40 Terms	C3	1373	4.12	3.75	4.02	4.21	4.50
41 Terms	C3	1381	4.12	3.75	4.02	4.21	4.50

Class Size: 16-35

Data	Item	N	Median	Cut1	Cut 2	Cut 3	Cut 4
40 Terms	24	2191	4.20	3.71	4.07	4.33	4.67
41 Terms	24	2336	4.17	3.70	4.05	4.32	4.66
40 Terms	C1	2191	4.09	3.66	3.97	4.19	4.44
41 Terms	C1	2336	4.07	3.63	3.95	4.17	4.43
40 Terms	C2	2191	4.22	3.79	4.11	4.32	4.56
41 Terms	C2	2336	4.20	3.76	4.09	4.31	4.55
40 Terms	C3	2191	4.05	3.64	3.95	4.15	4.38
41 Terms	C3	2336	4.04	3.62	3.93	4.14	4.37

Illustration of Stability of Norm Data for the College of Sciences



Class Size: 36-99

Data	Item	N	Median	Cut1	Cut 2	Cut 3	Cut 4
40 Terms	24	2717	4.03	3.49	3.90	4.14	4.43
41 Terms	24	2777	4.03	3.49	3.90	4.14	4.43
40 Terms	C1	2717	3.92	3.47	3.80	4.02	4.24
41 Terms	C1	2777	3.92	3.47	3.80	4.02	4.24
40 Terms	C2	2717	4.02	3.63	3.92	4.11	4.34
41 Terms	C2	2777	4.03	3.63	3.92	4.12	4.34
40 Terms	C3	2717	3.95	3.55	3.85	4.04	4.21
41 Terms	C3	2777	3.95	3.55	3.85	4.03	4.21

Class Size: Greater than 99

Data	Item	N	Median	Cut1	Cut 2	Cut 3	Cut 4
40 Terms	24	1196	4.06	3.49	3.93	4.18	4.50
41 Terms	24	1229	4.05	3.49	3.93	4.17	4.49
40 Terms	C1	1196	3.95	3.51	3.82	4.06	4.26
41 Terms	C1	1229	3.95	3.51	3.82	4.06	4.26
40 Terms	C2	1196	3.97	3.48	3.85	4.07	4.30
41 Terms	C2	1229	3.97	3.49	3.85	4.07	4.29
40 Terms	C3	1196	3.95	3.55	3.85	4.02	4.21
41 Terms	C3	1229	3.94	3.54	3.85	4.02	4.21

LEGEND

C1 is Preparation & Presentation = Items 10, 11, 13, 15, 18
 C2 is Interaction with Students = Items 14, 19, 20, 21, 22
 C3 is Assessment of Student Performance = Items 12, 16, 17, 23
 Item 24 = The instructor was an effective teacher.

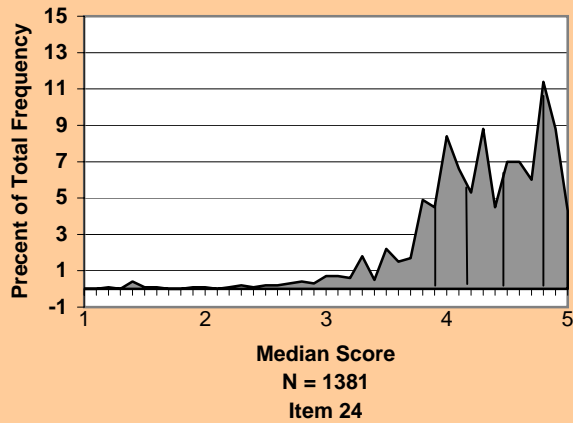
Note: In the "Data" column, "Terms" refers to quarters for every term previous to Fall 1999 and to semesters for every term starting with Fall 1999.

Norm Data for the College of Sciences

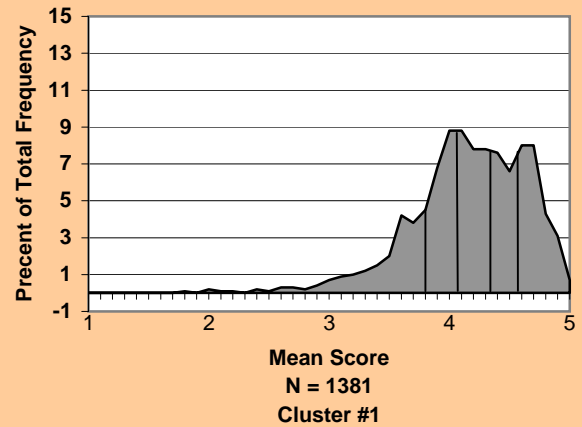


CLASS SIZE: LESS THAN 16

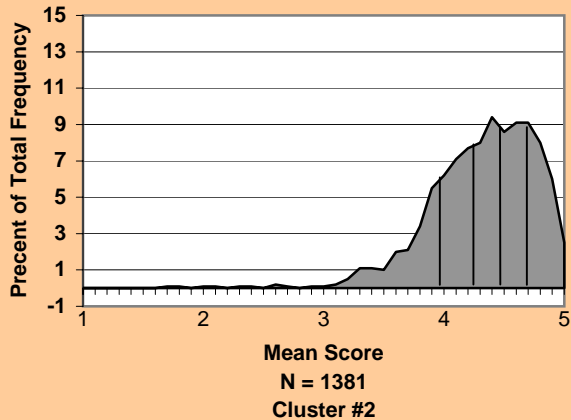
Instructor was an Effective Teacher



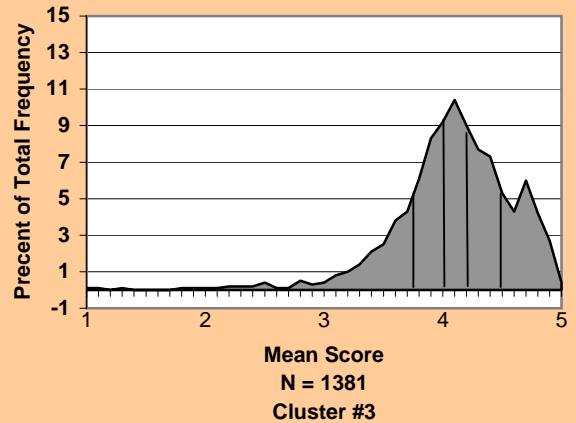
Preparation and Presentation of Course



Interaction With Students



Assessment of Student Performance

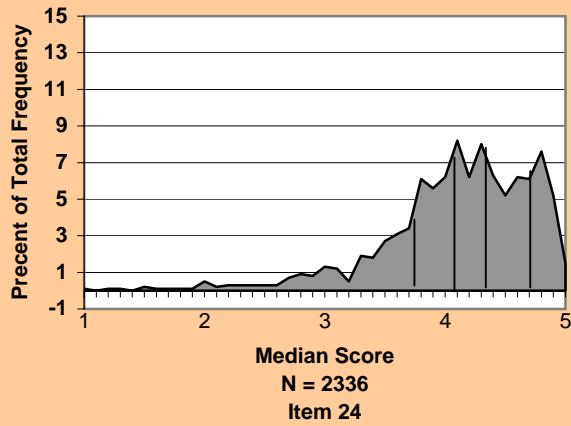


Norm Data for the College of Sciences

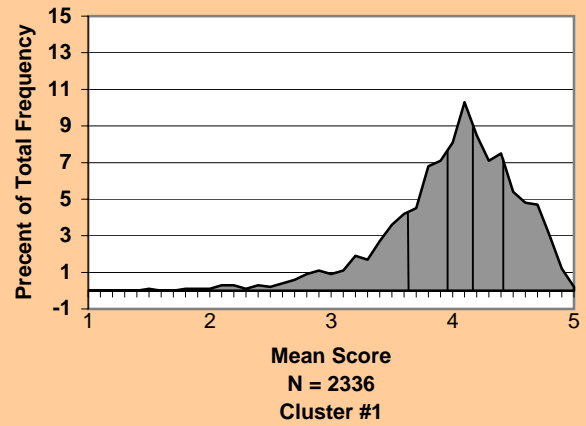


CLASS SIZE: 16 - 35

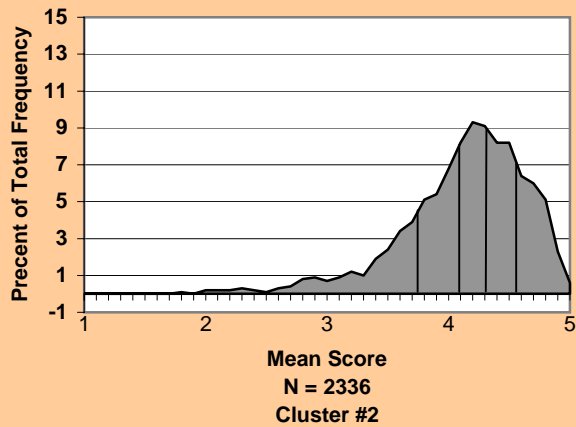
Instructor was an Effective Teacher



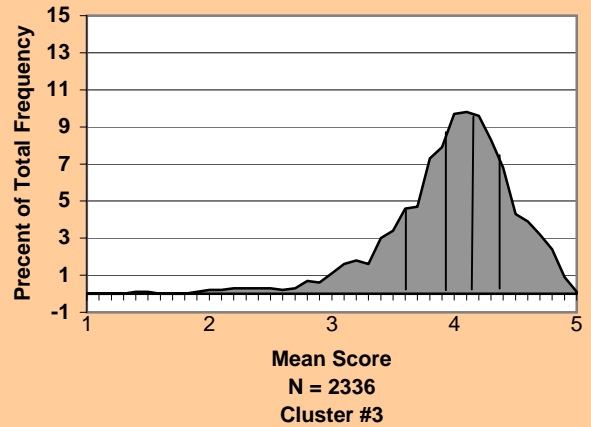
Preparation and Presentation of Course



Interaction With Students



Assessment of Student Performance

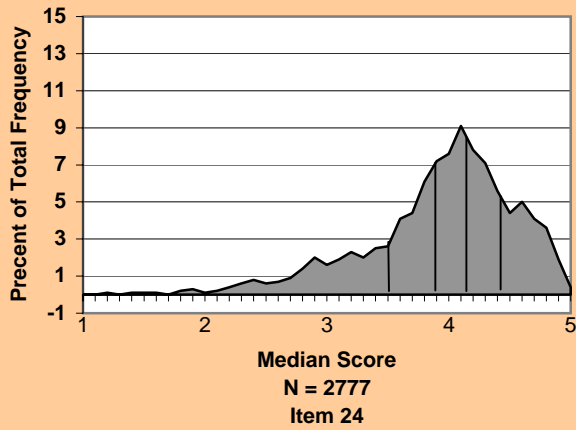


Norm Data for the College of Sciences

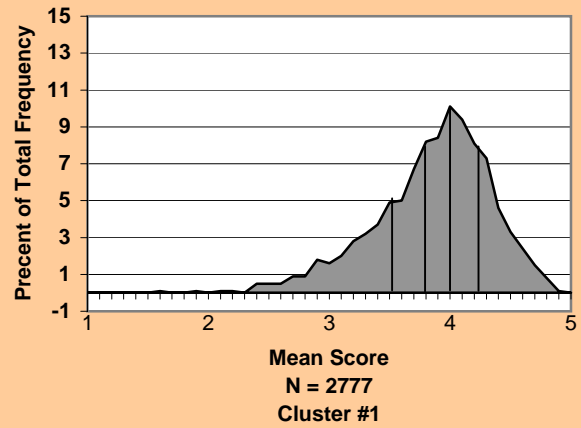


CLASS SIZE: 36 - 99

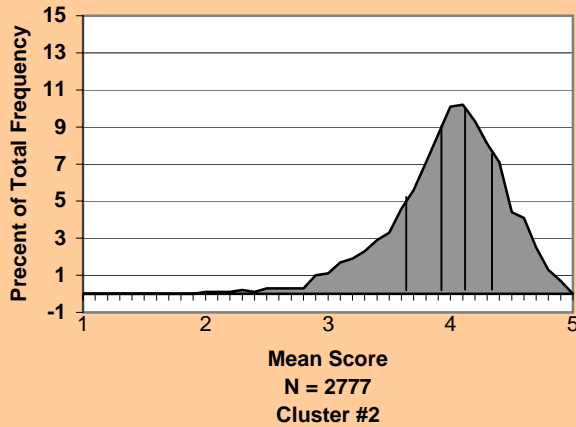
Instructor was an Effective Teacher



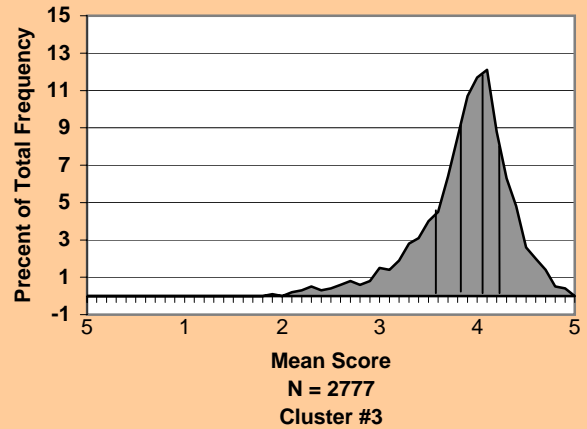
Preparation and Presentation of Course



Interaction With Students



Assessment of Student Performance

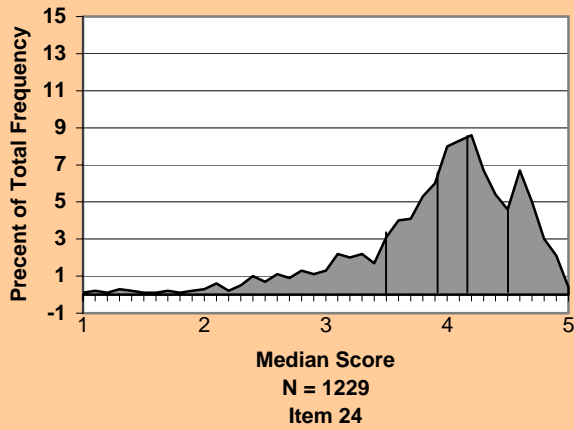


Norm Data for the College of Sciences

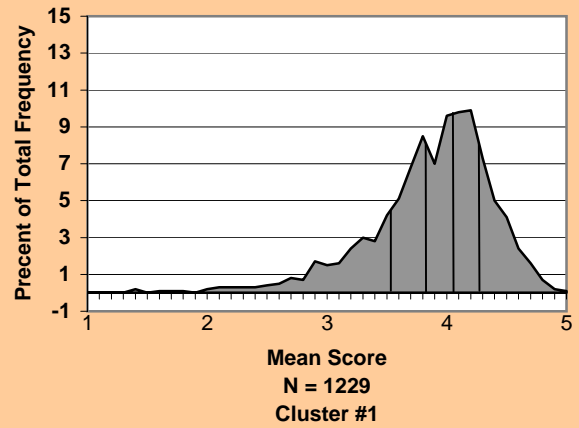


CLASS SIZE: Greater than 99

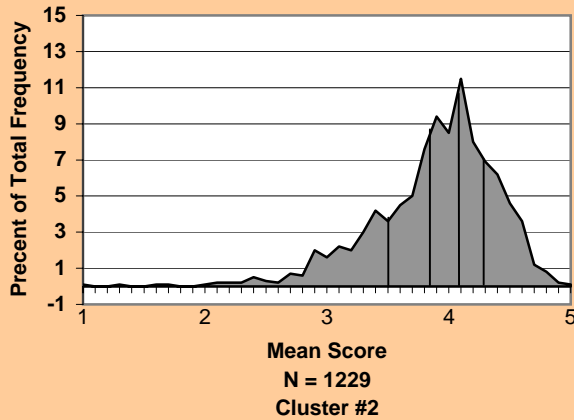
Instructor was an Effective Teacher



Preparation and Presentation of Course



Interaction With Students



Assessment of Student Performance

