

December 9, 2015

Dear Colleague:

Over the past year, the Office of Assessment has been processing the Course/Instructor Opinion Survey (CIOS) results for the Institute, which were previously processed through CETL. For 67 academic terms (39 quarters and 28 semesters—excluding summer sessions), the Institute has been collecting data and reporting descriptive statistics that provide a basis for interpreting individual ratings.

The original survey was designed in 1986 and consisted of 26 questions, later reduced to 24 by eliminating questions about students' gender and ethnicity. In Fall 2011, a streamlined CIOS was implemented, which was designed by representatives of faculty, students, and administration. This new version reduced the number of core questions from 24 to 10 and eliminated cluster scores. In Summer 2011, representatives of faculty, students, and administration again met to assess the survey and revised it to better reflect the literature on survey design and to improve the quality of feedback for instructors.

The following report focuses on survey Item 10: *Considering everything, the instructor was an effective teacher*. This question has been maintained in the same form throughout all versions of CIOS. To provide the most meaningful comparisons with individual scores, statistics are reported for each term in the academic year and with cumulative results since Fall 2001. This format enables faculty to compare their scores with distributions for specific semesters and for multi-year periods. Central tendencies and distributions of the question are reported by class size category and by college, as well as for the entire Institute. Experience and general research confirm that class size is a primary variable explaining significant differences in ratings. The following notation may help you interpret the report:

- “*N*” is the number of classes in a particular population frame.
- “Median” is the middle value of an ordered array of classes' interpolated median scores.
- Columns “Cut 1,” “Cut 2,” “Cut 3,” and “Cut 4” indicate the quintile values (20th, 40th, 60th, and 80th percentiles) in the distribution. These values are also drawn on the accompanying charts for the cumulative distribution.
- Values range from 1 to 5, where 1 is “strongly disagree” and 5 is “strongly agree.”

We trust that these data are helpful to you. If you have any questions, feel free to contact Dr. Tris Utschig at 404.385.2949 or < tris.utschig@gatech.edu >.

Jonathan Gordon, PhD
Director, Office of Assessment
< jon.gordon@gatech.edu >

Tristan T. Utschig, PhD
Assistant Director, Office of Assessment
< tris.utschig@gatech.edu >

INSTITUTE-WIDE

Fall 2014

Class Size	N	Median	Cut 1	Cut 2	Cut 3	Cut 4
< 16	1,341	4.80	4.00	4.50	4.80	5.00
16–35	1,266	4.60	3.90	4.40	4.70	4.90
36–99	677	4.40	3.80	4.20	4.60	4.80
> 99	97	4.30	3.76	4.02	4.50	4.70

Spring 2015

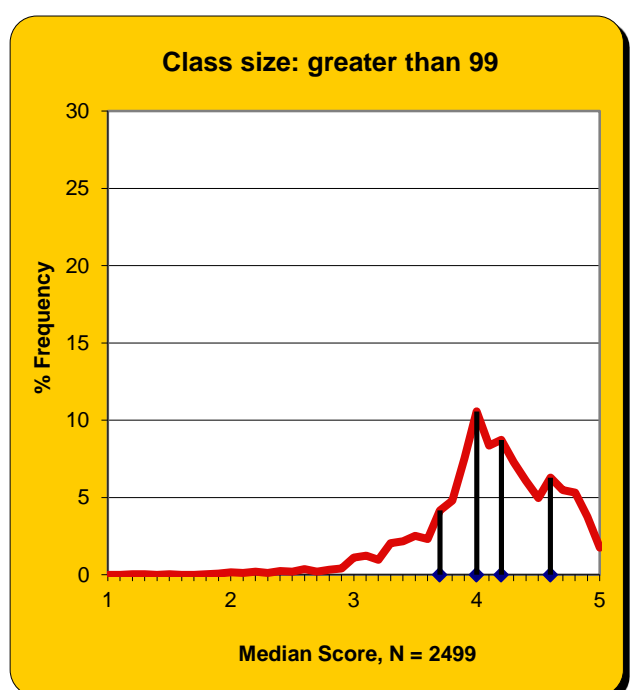
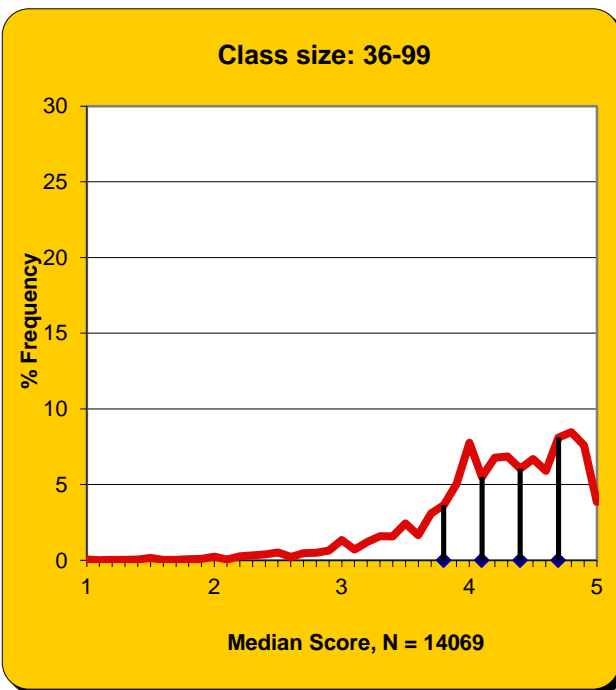
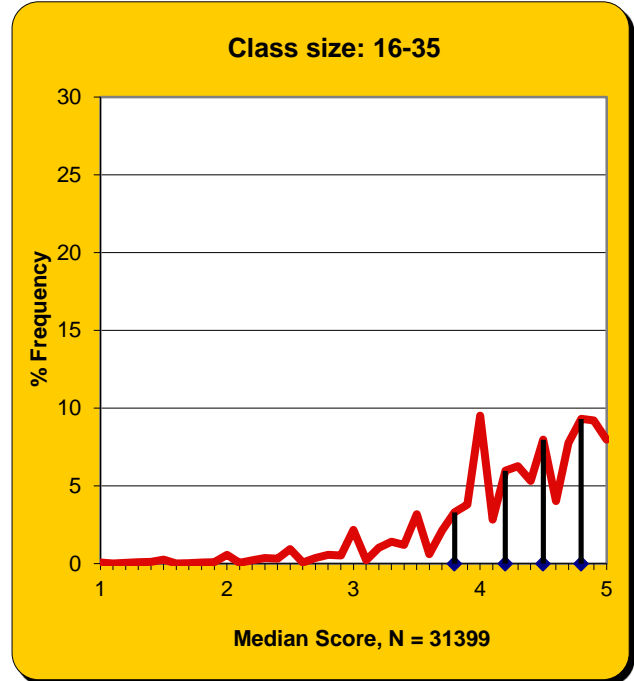
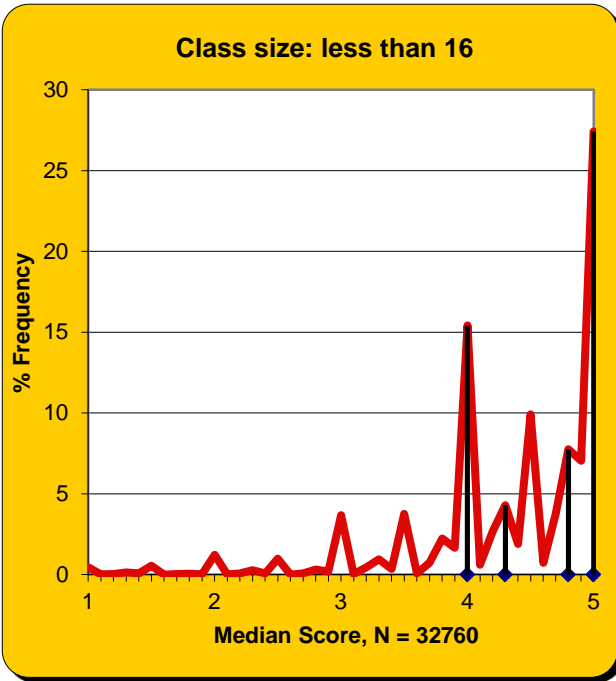
Class Size	N	Median	Cut 1	Cut 2	Cut 3	Cut 4
< 16	1,376	4.80	4.00	4.60	4.90	5.00
16–35	1,111	4.50	3.90	4.40	4.70	4.80
36–99	597	4.40	3.80	4.30	4.60	4.80
> 99	84	4.40	4.00	4.20	4.50	4.70

Fall 2001–Spring 2015

Class Size	N	Median	Cut 1	Cut 2	Cut 3	Cut 4
< 16	32,760	4.50	4.00	4.25	4.75	5.00
16–35	31,399	4.33	3.80	4.17	4.50	4.79
36–99	14,069	4.25	3.78	4.11	4.42	4.70
> 99	2,499	4.10	3.73	4.00	4.23	4.56

INSTITUTE-WIDE

Fall 2001–Spring 2015



COLLEGE OF ARCHITECTURE

Fall 2014

Class Size	N	Median	Cut 1	Cut 2	Cut 3	Cut 4
< 16	181	4.90	4.30	4.80	5.00	5.00
16–35	50	4.65	4.10	4.44	4.70	4.90
36–99	29	4.80	4.30	4.70	4.80	5.00
> 99	5	4.90	3.96	4.72	4.96	5.00

Spring 2015

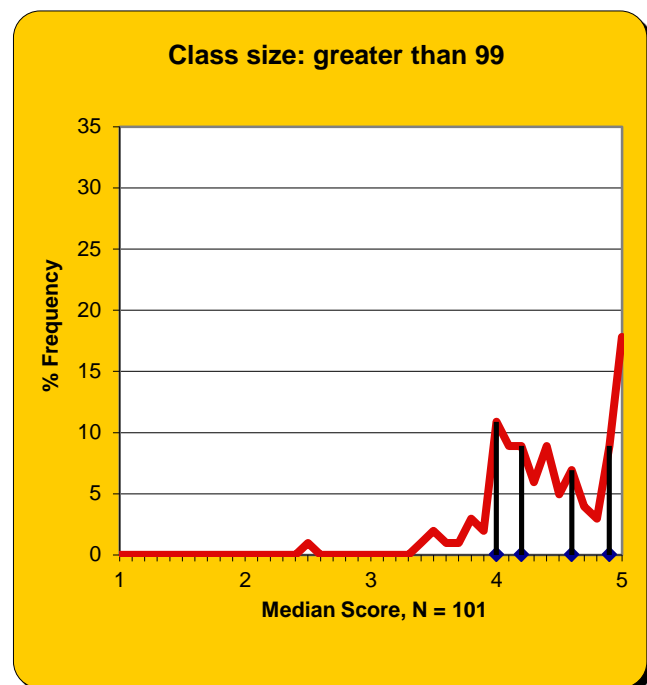
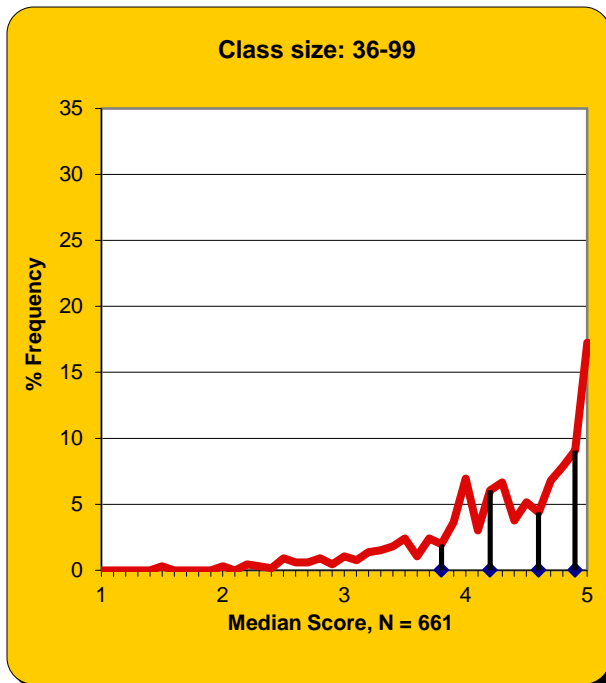
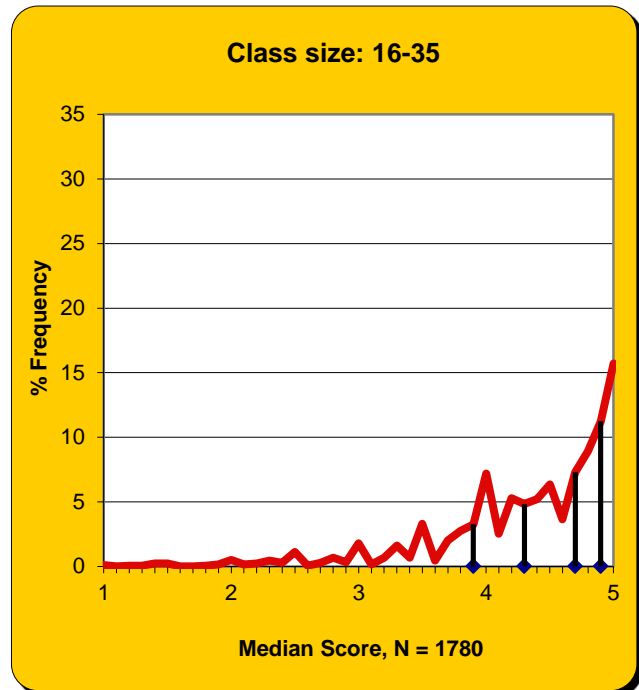
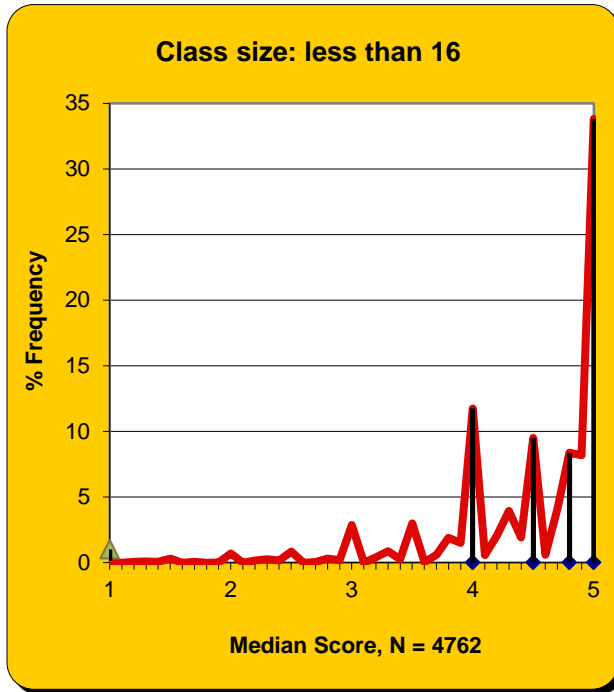
Class Size	N	Median	Cut 1	Cut 2	Cut 3	Cut 4
< 16	172	4.90	4.00	4.80	5.00	5.00
16–35	49	4.80	4.30	4.60	4.80	4.90
36–99	20	4.70	4.10	4.60	4.80	4.90
> 99	2	4.45	4.40	4.42	4.48	4.50

Fall 2001–Spring 2015

Class Size	N	Median	Cut 1	Cut 2	Cut 3	Cut 4
< 16	4,762	4.75	4.00	4.50	4.83	5.00
16–35	1,780	4.50	3.88	4.25	4.67	4.88
36–99	661	4.41	3.83	4.23	4.63	4.88
> 99	101	4.37	4.00	4.22	4.55	4.90

COLLEGE OF ARCHITECTURE

Fall 2001–Spring 2015



COLLEGE OF COMPUTING

Fall 2014

Class Size	N	Median	Cut 1	Cut 2	Cut 3	Cut 4
< 16	70	4.70	4.00	4.50	4.80	5.00
16–35	86	4.70	4.20	4.60	4.70	4.80
36–99	100	4.40	3.80	4.30	4.56	4.70
> 99	10	4.20	3.82	3.94	4.46	4.78

Spring 2015

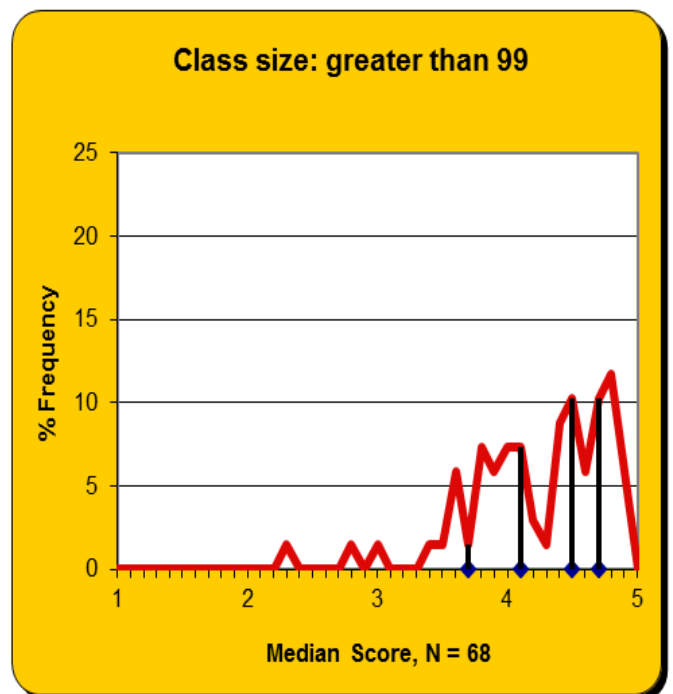
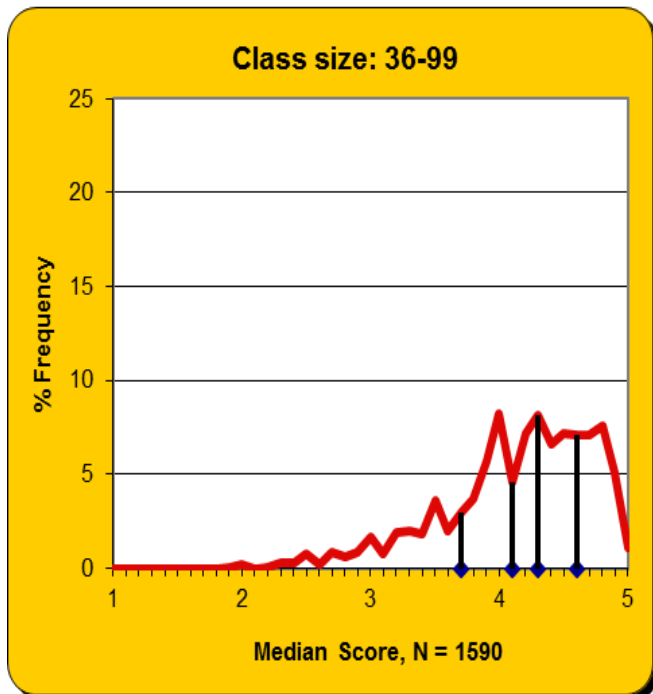
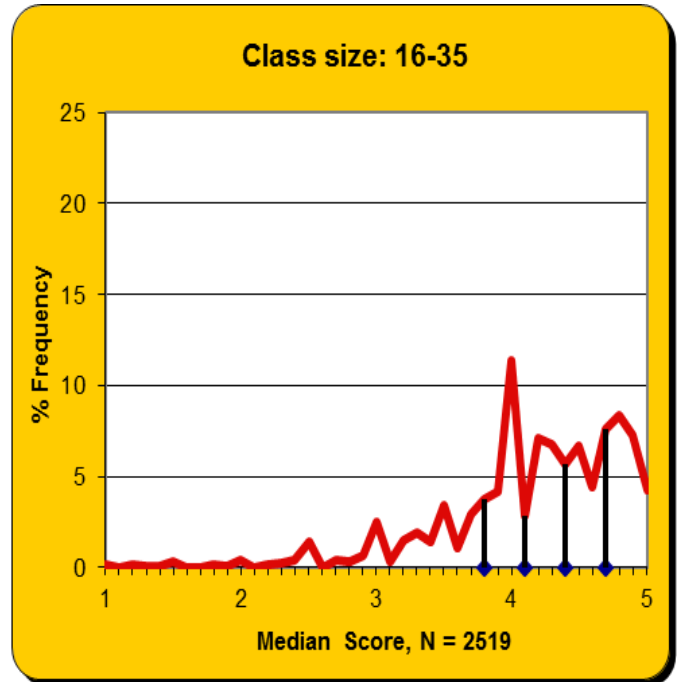
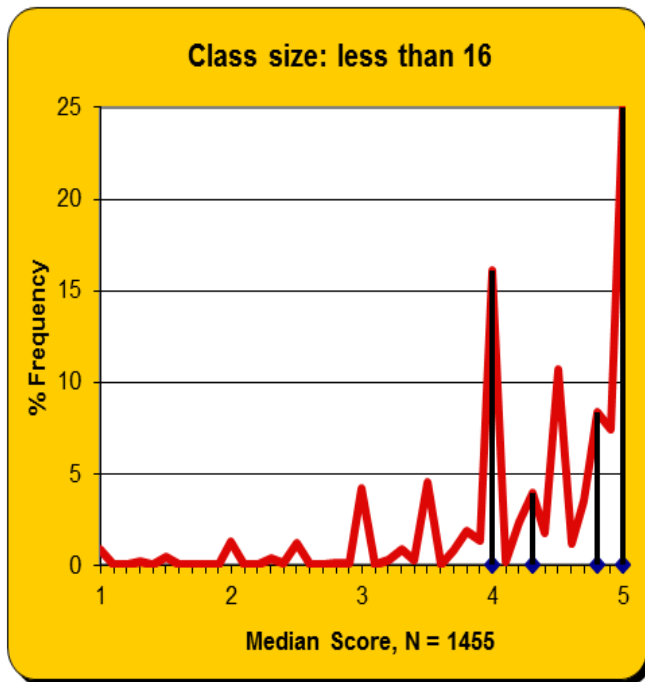
Class Size	N	Median	Cut 1	Cut 2	Cut 3	Cut 4
< 16	65	4.70	3.50	4.50	4.80	5.00
16–35	79	4.60	4.20	4.50	4.70	4.80
36–99	91	4.30	3.50	4.30	4.50	4.70
> 99	17	4.70	4.28	4.52	4.70	4.84

Fall 2001–Spring 2015

Class Size	N	Median	Cut 1	Cut 2	Cut 3	Cut 4
< 16	1,455	4.50	4.00	4.25	4.75	5.00
16–35	2,519	4.25	3.75	4.07	4.38	4.70
36–99	1,590	4.20	3.69	4.06	4.33	4.63
> 99	68	4.37	3.74	4.09	4.50	4.70

COLLEGE OF COMPUTING

Fall 2001–Spring 2015



COLLEGE OF ENGINEERING

Fall 2014

Class Size	N	Median	Cut 1	Cut 2	Cut 3	Cut 4
< 16	432	4.40	3.80	4.00	4.60	4.90
16–35	343	4.50	3.90	4.30	4.60	4.80
36–99	332	4.30	3.80	4.10	4.58	4.80
> 99	21	4.10	3.34	3.88	4.22	4.76

Spring 2015

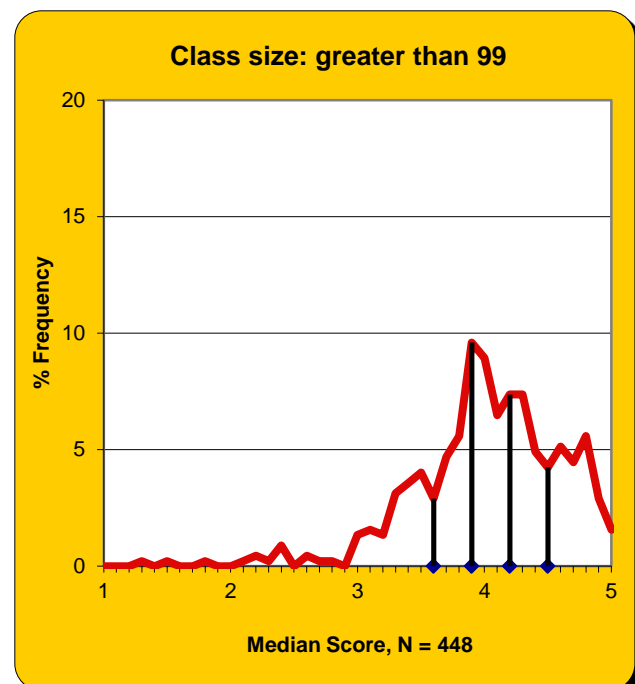
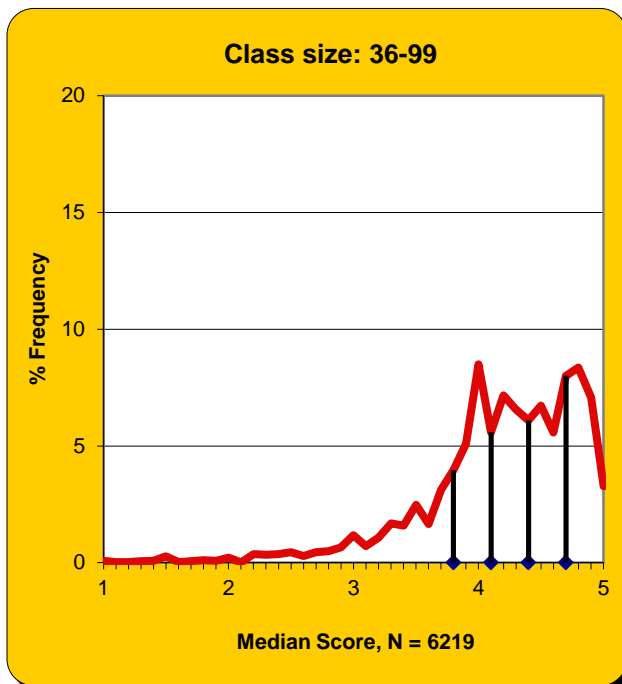
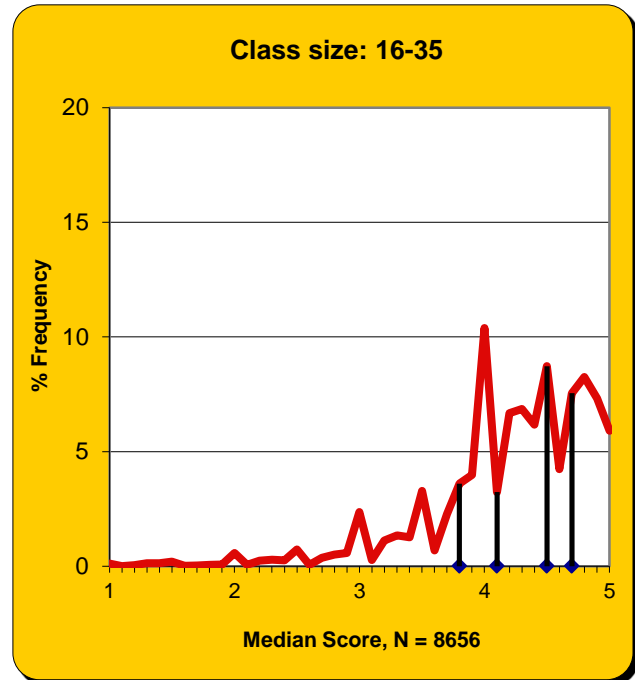
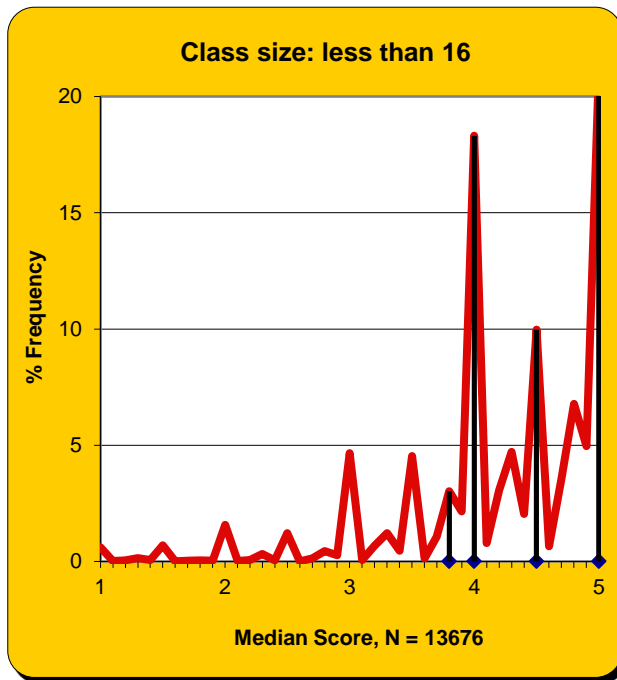
Class Size	N	Median	Cut 1	Cut 2	Cut 3	Cut 4
< 16	501	4.70	3.74	4.30	4.80	5.00
16–35	399	4.40	3.70	4.20	4.60	4.80
36–99	298	4.30	3.90	4.20	4.60	4.80
> 99	14	4.00	2.40	4.00	4.10	4.20

Fall 2001–Spring 2015

Class Size	N	Median	Cut 1	Cut 2	Cut 3	Cut 4
< 16	13,676	4.25	3.75	4.00	4.50	5.00
16–35	8,656	4.29	3.80	4.13	4.50	4.74
36–99	6,219	4.25	3.75	4.10	4.40	4.70
> 99	448	4.01	3.56	3.89	4.16	4.50

COLLEGE OF ENGINEERING

Fall 2001–Spring 2015



IVAN ALLEN COLLEGE

Fall 2014

Class Size	N	Median	Cut 1	Cut 2	Cut 3	Cut 4
< 16	254	4.80	4.50	4.80	4.90	5.00
16–35	268	4.70	4.30	4.60	4.80	4.90
36–99	24	4.25	3.60	4.20	4.30	4.70
> 99	18	4.40	3.70	4.18	4.64	4.90

Spring 2015

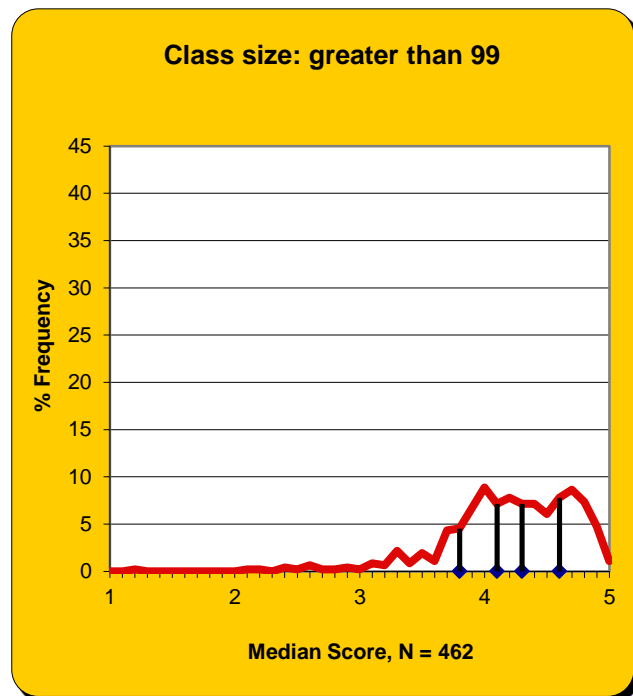
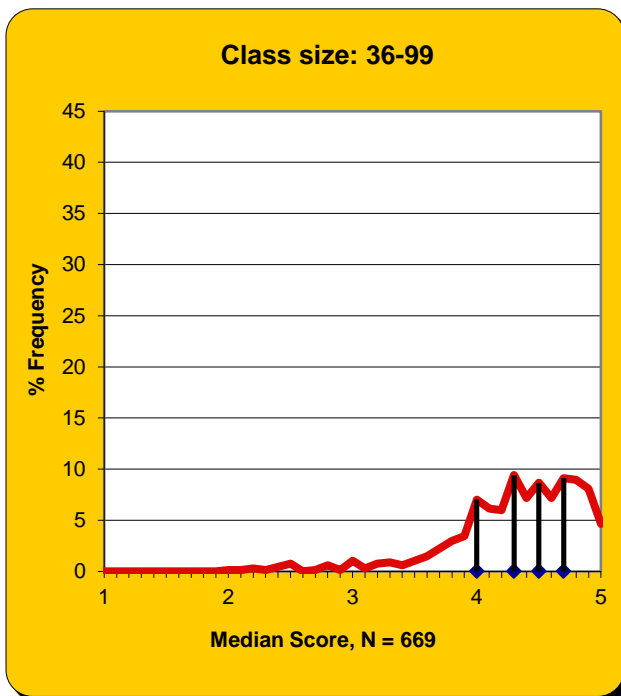
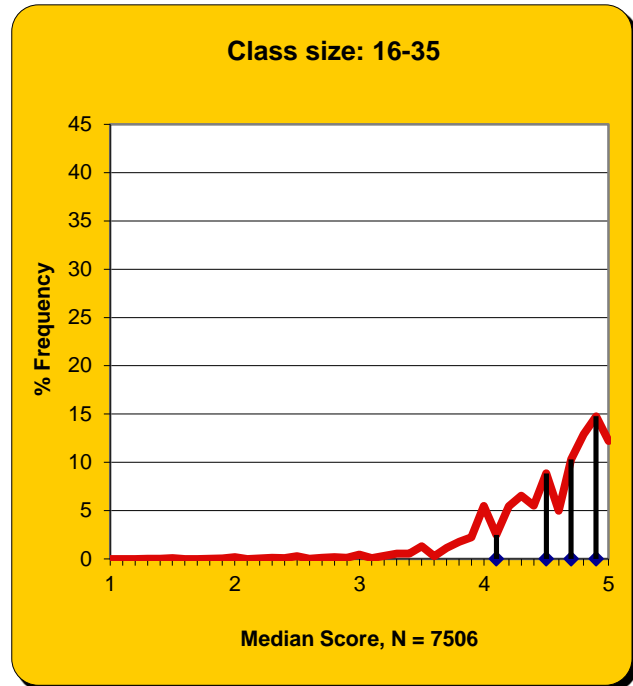
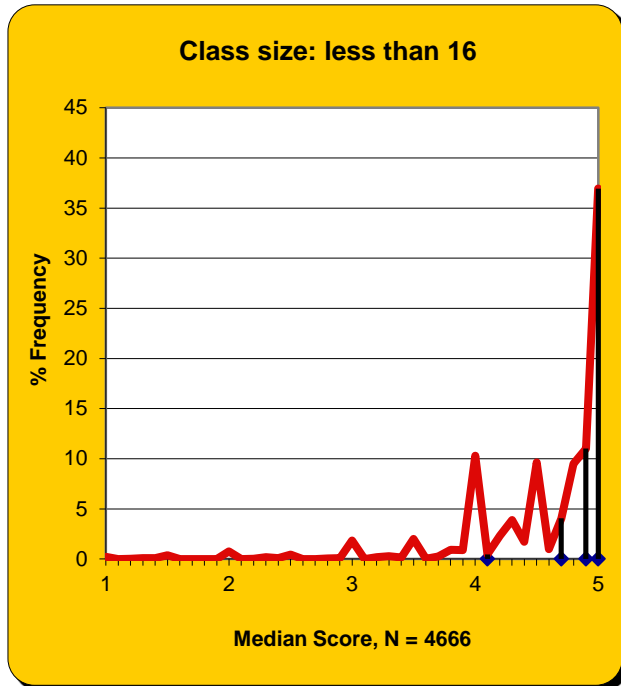
Class Size	N	Median	Cut 1	Cut 2	Cut 3	Cut 4
< 16	262	4.90	4.40	4.80	4.98	5.00
16–35	240	4.70	4.30	4.60	4.80	4.90
36–99	25	4.70	3.82	4.44	4.80	4.90
> 99	11	4.50	4.04	4.20	4.62	4.80

Fall 2001–Spring 2015

Class Size	N	Median	Cut 1	Cut 2	Cut 3	Cut 4
< 16	4,666	4.80	4.12	4.67	4.90	5.00
16–35	7,506	4.61	4.14	4.50	4.70	4.86
36–99	669	4.36	3.96	4.25	4.50	4.73
> 99	462	4.21	3.82	4.08	4.34	4.63

IVAN ALLEN COLLEGE

Fall 2001–Spring 2015



SHELLER COLLEGE OF BUSINESS

Fall 2014

Class Size	N	Median	Cut 1	Cut 2	Cut 3	Cut 4
< 16	93	4.80	4.30	4.76	4.90	5.00
16–35	61	4.70	4.30	4.68	4.80	4.90
36–99	119	4.70	4.00	4.50	4.80	4.90
> 99	-0-	n/a	n/a	n/a	n/a	n/a

Spring 2015

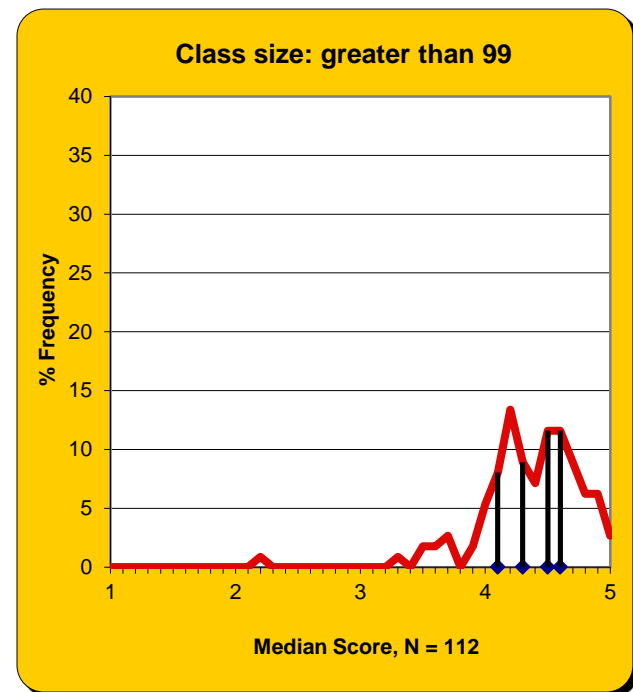
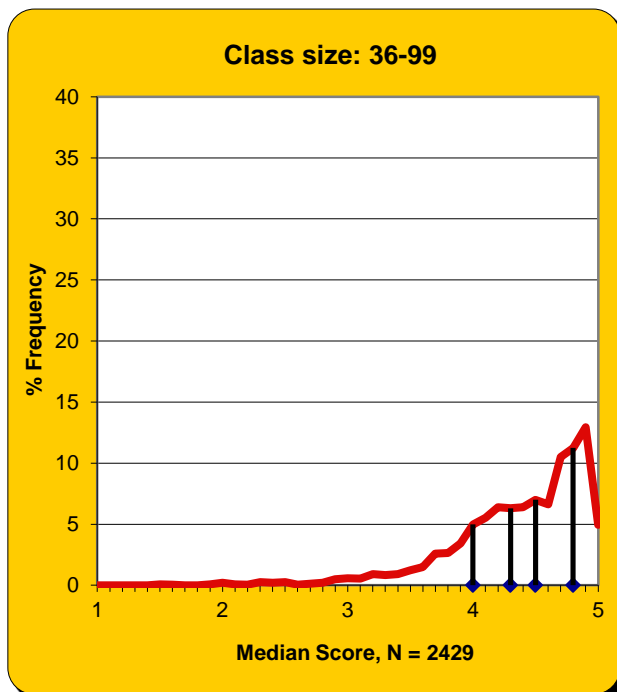
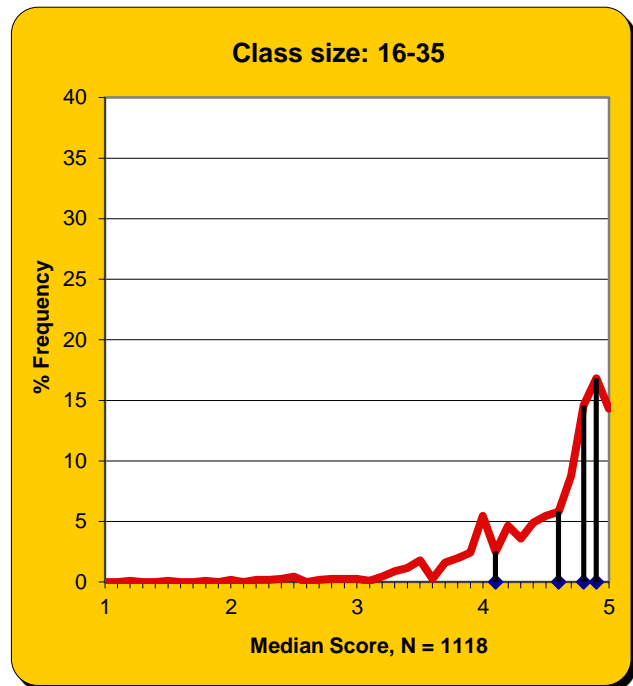
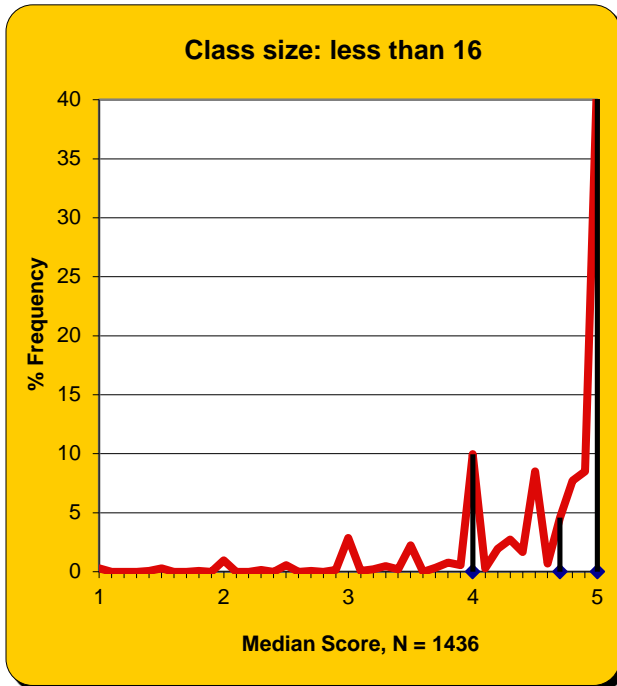
Class Size	N	Median	Cut 1	Cut 2	Cut 3	Cut 4
< 16	98	4.90	4.00	4.80	5.00	5.00
16–35	65	4.80	4.32	4.70	4.80	5.00
36–99	104	4.70	4.10	4.50	4.70	4.90
> 99	-0-	n/a	n/a	n/a	n/a	n/a

Fall 2001–Spring 2015

Class Size	N	Median	Cut 1	Cut 2	Cut 3	Cut 4
< 16	1,436	4.83	4.00	4.70	5.00	5.00
16–35	1,118	4.67	4.09	4.55	4.75	4.88
36–99	2,429	4.47	3.98	4.30	4.60	4.80
> 99	112	4.34	4.05	4.26	4.48	4.63

SCHELLER COLLEGE OF BUSINESS

Fall 2001–Spring 2015



COLLEGE OF SCIENCES

Fall 2014

Class Size	N	Median	Cut 1	Cut 2	Cut 3	Cut 4
< 16	220	4.80	4.00	4.50	4.80	5.00
16–35	356	4.30	3.50	4.00	4.50	4.70
36–99	65	4.00	3.70	4.00	4.30	4.58
> 99	43	4.20	3.68	4.10	4.50	4.60

Spring 2015

Class Size	N	Median	Cut 1	Cut 2	Cut 3	Cut 4
< 16	245	4.80	4.00	4.50	4.80	5.00
16–35	261	4.40	3.80	4.20	4.50	4.80
36–99	54	4.15	3.50	4.00	4.30	4.70
> 99	39	4.30	3.90	4.20	4.60	4.70

Fall 2001–Spring 2015

Class Size	N	Median	Cut 1	Cut 2	Cut 3	Cut 4
< 16	6,003	4.50	4.00	4.17	4.67	5.00
16–35	8,842	4.07	3.50	4.00	4.25	4.63
36–99	2,374	4.09	3.59	4.00	4.25	4.60
> 99	1,301	4.05	3.70	3.97	4.15	4.47

COLLEGE OF SCIENCES

Fall 2001–Spring 2015

